



CASCADE

A&E

JUNE 2026 | VOLUME 32 | ISSUE 6

M A G A Z I N E

Tananáwit



A COMMUNITY OF
WARM SPRINGS ARTISTS



Come visit the Tananáwit shop and bask in the beauty and creativity of Warm Springs artists. Our talented native artists are the heart of our organization. Tananáwit, a place of traditional art, a place to preserve our heritage, a place to share and, a place to learn. Decades of tribal art have been passed down from one generation to the next.



Open Monday-Friday 10am - 6pm | Saturday & Sunday 11am - 6pm
541.553.3249 | 3240 Walsey Lane, Suite 5 | Warm Springs, Oregon 97761



23rd ANNUAL
**BEND
FILM
FEST**
OCT 7-11, 2026



call for ART!
ALL COMMUNITY ART SHOW




OPEN TO ALL 2D & 3D ARTISTS
FRESH LOCAL TALENT FROM OUR COMMUNITY
 AUGUST 5 TO SEPTEMBER 26 • ALL AGES WELCOME
 APPLY ONLINE BY JULY 7

DRY CANYON COMMUNITY ART CENTER Show at
 Dry Canyon Community Art Center
 415 6th St Redmond

For info & sign up: www.drycanyonarts.org/dcaa-call-and-guidelines

88.9FM



K P O V
 kpov.org | 541-322-0863



MIGUEL ANGEL ALMEIDA
LAS MANOS QUE DAN DE COMER
THE HANDS THAT FEED
 ART EXHIBITION OPEN THROUGH **OCTOBER 11**

HIGH DESERT MUSEUM
highdesertmuseum.org

inside

- 4 COVER STORY
- 6 FIRST FRIDAY/
BEND EXHIBITS
- 10 FIRST FRIDAY/
REDMOND EXHIBITS
- 11 PHOTOS
- 13 ARTS
- 19 LITERATURE
- 20 DINING
- 22 MUSIC
- 26 FILM/THEATRE
- 27 SISTERS
- 28 CENTRAL OREGON
CALENDAR
- 30 SUNRIVER
- 32 WORKSHOPS
CALL TO ART

PRODUCERS

Pamela Hulse Andrews // Founder
 Jeff Martin // President/CEO
 Marcee Hillman Moeggenberg // Editor/Production Director/Feature Writer
 Emma Carpenter // Content Proofreader
 David Hill // Distribution

Cascade A&E is a publication of Cascade Publications Inc., locally owned and operated since 1994 and published in Bend, Oregon the Wednesday before First Friday every month. For editorial and advertising information call 541-388-5665. Send calendar and press releases to AE@CascadeAE.com or A&E PO Box 53, Bend OR 97707. Cascade A&E is available for free all over Central Oregon or \$30 for a year subscription. Subscriptions outside Central Oregon are \$40 a year. CascadeAE.com



Oregon Origins Project VIII: Echoes of Eruption
 June 25-26, 7:30pm

Oregon Origins Project presents a bold and multifaceted exploration of Newberry Volcano in central Oregon, the largest volcano in the Cascade Range.

The program includes a new work for contemporary dance inspired by the caldera, an evening of Northern Paiute legends and stories, and a special guided tour of the volcano for ticket holders.

Stories of the Northern Paiute June 25, 2026, 7:30pm Tower Theatre, Bend	Echoes of Eruption June 26, 2026, 7:30pm Tower Theatre, Bend
---	---




Tickets available at oregonorigins.org



Special S. Lammie Fund of Regis University provided



Woven Through Generations

Cascade A&E Magazine June Cover Artist Blends Tradition with Contemporary Art

Natalie “Nat” Kirk is a contemporary artist and a member of the Confederated Tribes of Warm Springs. In 1997 Master Weaver Eraina Palmer taught her to weave while working at The Museum at Warm Springs. Throughout her 25 years at The Museum as the curator and exhibit coordinator, Natalie has taught many eager student, including her daughter who is her current apprentice.

Currently, Natalie works at Tananawit, a nonprofit consignment shop that represents 92 tribal artist, including their sister tribes of Yakima and Umatilla.

Natalie, or “Nat,” works in a variety of media beyond Wapas and baskets. Her works include painting, drawing and creating pieces using a wide range of materials. Her collections and commissions include the Hallie Ford Museum in Salem, Oregon; High Desert Museum collection; Museum of Natural History at the University of Oregon; Autry Museum in Los Angeles, California; the late author Sidney Sheldon collection in Palm Springs, California; Pacific Northwest College of Art in Portland, Oregon; Bend Public Library; Condor Designs (commissioned); The Museum at Warm Springs collections; Kah-Nee-Ta Resort and Spa teepee designs; Tryon Creek State Park; and the North American Bigfoot Museum.

Nat has exhibited at The Museum at Warm Springs Tribal Art Exhibit, earning Judges Choice honors in 2000 and 2025; Art Adventure Gallery in Madras; and the Portland Art Museum’s Art in the Round collaboration with Lillian Pitt and James Lavadour. Her work was also featured in *Spirit of Creation* at the High Desert Museum, *Weaving the Strands* at the New Zealand Embassy and *Native Innovations*, a traveling exhibition showcasing how Oregon’s First Nations have thrived for millennia through technological, cultural and environmental ingenuity.

Nat currently resides in Warm Springs where she creates gif along with heirlooms for family. Her work can be found at the Tananawit shop and gallery and the Museum at Warm Springs.

“Our people are from Nch’I Wana, The Big River or The Columbia River where Celilo Falls once thrived. Our falls were inundated in 1957 and our “Ancient Art” of pictographs and petroglyphs were lost to this event. I draw inspiration from my homelands and I try to keep our ancient art alive through my art.”

Fiber art by Natalie “Nat” Kirk



Nci Wanami Tamnanaxt - The Big Rivers Story 2021, wool yarn, Jute, copper, smoked elk hide and cut glass beads, currently housed at the Pacific Northwest College of Art. Photo by Thomas Osborne

artHouse LTA

113 NW Minnesota Ave.
541-337-9985 • [instagram.com/arthouse.lta](https://www.instagram.com/arthouse.lta)
June 5, 5-9pm. Not all coping mechanisms look destructive.

Heavy Hearts Club, a moody new exhibition by Gabriel LTA at artHouse LTA, trades optimism for atmosphere through dark palettes, reflective gloss, and emotionally charged textures. Equal parts beautiful and bruised, the paintings explore why we cling so tightly to the things that hurt us.
Free and open to the public.

Bend Senior Center

1600 SE Reed Market Rd.
541-388-1133
[bendparksandrec.org/facility/bend-senior-center](https://www.bendparksandrec.org/facility/bend-senior-center)

The Bend Senior Center at the Larkspur Community Center is showing art by members or the SageBrushers Art Society. Come visit the facility and enjoy beautiful paintings in acrylic, oil, pastel, and watercolor, as well as outstanding photography.

Blue Spruce Pottery

20591 Dorchester E.
541-382-0197 • [bluesprucepottery.com](https://www.bluesprucepottery.com)
This family-owned business has been making handmade pottery in Bend since 1976. Call to arrange a time to come shop their large selection of mugs, bowls, casseroles, lamps and more. Shop online and have gifts shipped directly to your family and friends. You can also find Blue Spruce Pottery at Red Chair Gallery in downtown Bend.



COCC Barber Library

2600 NW College Way
541-383-7560 • [cocc.edu/library](https://www.cocc.edu/library)

Fine art photo exhibit at COCC captures spirit of ghost town. Portraying the Western spirit and history of the small community of Shaniko in north-central Oregon, an exhibition of fine art documentary photography, titled *Believers*, by Bend photographer Rosie Day will be on display at Central Oregon Community College's Barber Library Rotunda Gallery from June 16 to September 1.

Day's work offers an intimate look at the residents of Shaniko — a once-thriving area deemed the "Wool Capital of the World" and now a veritable ghost town — whom she collaborated with over a five-year period. Some of the work employs the cyanotype process, an analogue photographic technique created in the 1800s.

"Shaniko is a place where America's past becomes both a refuge and an

illusion," Day said of the collection. "This Western dream is sustained by Shaniko's residents, whose care preserves the town's history, stories and enduring sense of possibility."

Originally from the United Kingdom, Day formerly lived in the ranch community of Spray, working as a high school educator, before relocating to Bend. A former staff photographer at COCC, she now teaches in the college's welding program. She holds a Bachelor of Arts from the University of the Arts London and a Master of Arts from Falmouth University.

The library will hold a reception from 3-5pm on Wednesday, June 17. The exhibition is free and open to the public. For gallery hours of operation, visit [cocc.edu/library](https://www.cocc.edu/library).

For more information, contact Tina Hovekamp, director of library services, at 541-383-7295 or thovekamp@cocc.edu.

In advance of college events, persons needing accommodation or transportation because of a physical or mobility disability should contact campus services at 541-383-7775. For accommodation because of other disability such as hearing impairment, contact student accessibility services at sas@cocc.edu or 541-383-7583.

The Grove

921 NW Mt. Washington Dr.
The Grove presents Liz Levesque, abstract floral watercolors.

Liz lives in Bend and paints abstract watercolors. As a hospice and palliative care physician, she finds painting has helped her heart express and process grief while staying connected to emotions that arise through love and loss. In the flow of watercolor and through layered washes and blooming pigments, Liz creates visual spaces where grief and gratitude coexist, mirroring the journeys she witnesses daily. She hopes her creativity invites others to discover the moments of beauty and joy within life's most vulnerable chapters.



High Desert Museum

59800 S Hwy. 97
541-382-4754
[highdesertmuseum.org](https://www.highdesertmuseum.org)

Through June 7, come enjoy *Kids Curate*, student artworks based on what they learned over months of special in-class visits as well as field trips to the Museum.

Continuing through June 28, *Drawn West* explores the history and art of promoting the American West; delving into a century of salesmanship, when artists and cartographers alike crafted an image of the West that depicted both fact and fiction. In a visually engaging exhibition featuring 50-plus maps, artworks and advertisements from the Museum's extensive collections, *Drawn West: A History of Promoting Place*

invites you to explore the myths and marketing of the American West. Explore original advertisements, maps and artwork from prominent Western artists including Charles M. Russell, Frederic Remington and more.

The recently opened exhibition, *Miguel Almeida: Las Manos que dan de Comer*, continues through October 11. In a new, site-specific installation for High Desert Museum, Almeida shares murals, sculptures and animations offering a window into the daily lives of the people that harvest the fresh fruits and vegetables bound for our local markets and dinner tables. *Miguel Almeida: Las Manos que dan de Comer* (The Hands That Feed) is presented in English and Spanish.

Continuing through January 3, 2027: *Under Pressure: A Volcanic Exploration*. For thousands of years, the tranquility of the High Desert has been punctuated by the explosive power of volcanoes. *Under Pressure: A Volcanic Exploration* explores the natural history and science behind the West's most iconic powerhouses. This immersive gallery experience will engage visitors' senses with hands-on activities and intense visuals, feeling the coarseness of volcanic rock and hearing stories about historic eruptions. *Under Pressure* takes a deep dive into the geologic giants that exist all around us.

Jeffrey Murray Photography Gallery

118 NW Minnesota Ave.
541-325-6225 • [jeffreymurrayphotography.com](https://www.jeffreymurrayphotography.com)

The Jeffrey Murray Photography Gallery features the work of local photographer Jeffrey Murray. Visitors can browse comfortably in the two-story gallery enjoying visually adventurous displays of landscape, wildlife and contemporary work. Open Tuesday-Sunday.

Kreitzer Gallery

20214 Archie Briggs Rd.
805-234-2048 • [KreitzerArt.com](https://www.KreitzerArt.com)

Kreitzer Gallery and Studio open every week Friday through Sunday, 1-5pm. Please text ahead to view: 805-234-2048.

Thomas Albright, Art Critic of the *San Francisco Chronicle* wrote: "David Kreitzer is a highly traditional figure painter who demonstrates how much poetic intensity the old tradition can still contain." A full-time artist since he received his master's degree in painting at San Jose State University in 1967, David grew up the son of a Lutheran minister who, due to his calling, moved his family frequently throughout the Nebraska countryside. His works are in the collections of Howard and Roberta Ahmanson, Hirschhorn Foundation, the corporate headquarters of Revlon Olga, Barnes-Hind, Sinclair Paints, Lloyd's Bank, Cargill and the San Diego, Sheldon, Minnesota, Santa Barbara, and San Luis Obispo Museums. Private collectors include Howard and Roberta Ahmanson, Ray Bradbury, Mary Tyler Moore, Michael Douglas, Pepe Romero, Quinn Martin, Raymond Burr and Donald Simon.

Layor Art Gallery

1000 NW Wall St., Ste. 110
541-322-0421 • [layorart.com](https://www.layorart.com)

Layor Art welcomes June with a featured exhibition of new landscape paintings by Ruth Carroll alongside a special pop-up presentation, *Between the Covers*, by mixed media artist Sondra Holtzman.

Working in oil and cold wax, Carroll



creates expressive landscapes inspired by the quiet rhythms and dramatic light of Central Oregon. Her layered surfaces balance atmosphere and texture, drawing from years of plein air painting and observation. Carroll's professional background includes award-winning exhibitions throughout the United States, gallery ownership in St. Augustine, Florida, and recognition from organizations including Oil Painters of America.

Presented as a special pop-up installation, *Between the Covers* explores storytelling, memory, and material through collaged vintage book covers, handmade books, framed assemblage works, and artwork created directly on found book pages. The exhibition expands beyond the traditional wall presentation, transforming the gallery into an immersive and unconventional display. Holtzman studied at Rhode Island School of Design and California College of the Arts and has worked professionally as both an exhibiting artist and educator for more than 30 years. Her multidisciplinary practice draws from travel, nature, and a lifelong fascination with collected objects and visual narratives.

The exhibition opens Friday, June 5 from 5-8pm during First Friday Art Walk and continues through the month of June.

Lubbesmeyer Art Studio & Gallery

Second Story Loft, Center of Old Mill District
541-706-0761 • [lubbesmeyerart.com](https://www.lubbesmeyerart.com)

Continuing through June, *Migration* is part of an ongoing series of vibrant, expansive landscapes dominated by an ethereal depth of the sky. In this painting, a hummingbird is depicted by a tiny brush stroke placed in an enormous sky to represent the flight of thousands of miles to journey from its winter habitat in Central and South America, for the spring breeding season in North America.

This astonishing event is an inspiring metaphor for perseverance through that which may seem insurmountable.

This painting is a collaborative work by twin artists Lisa and Lori Lubbesmeyer. Working at the Lubbesmeyer Art Studio & Gallery in Bend, the sisters are known for a unique creative process where they take turns working on the same piece to achieve a unified vision.

Oxford Hotel
10 NW Minnesota Ave.
541-382-8436

Janice Rhodes is the featured artist at The Oxford Hotel-Bend for the month of June. A member of the High Desert Art League, Janice works in encaustics, which involves melting wax, tree resin and pigments to create colorful paintings. Encaustics were first developed about 2000 years ago in ancient Greece. Janice has mastered this medium to develop her wonderful modern paintings of western life. highdesertartleague.com



Peterson Contemporary Art
550 NW Franklin Ave.
541-633-7148 • pcgalleries.com
Peterson Contemporary Art opens *The Space Between Us* June 5, from 5-8pm. This show features painters Shar Coulson and Dawn Emerson. Shar Coulson's paintings explore the tension between perception and reality. Her rich paint application plays with solid contrast and a spectrum of

tonal shifts, resulting in a harmonious balance of expressive energy and lush tranquility. In her current work, she focuses on finding the flow state between fragility and fortitude. Dawn Emerson is known for her fusion of abstraction



Please send First Friday Submissions
No Later than June 17 for the
July Edition
to: AE@CascadeAE.com

and realism, using multiple mediums to convey emotion, movement, and mood. Her technique blends dynamic line work, gem-like colors and layered textures to create pieces that feel alive and expressive. She interprets her subjects through an emotional lens, allowing abstraction to serve as a vehicle for viewer's feelings. Please join us to enjoy live music, a glass of wine and great conversation! The show runs through the end of June.

Premiere Property Group
25 NW Minnesota Ave.
541-241-6860
bend.premierepropertygroup.com

Premier Property Group is having a watercolor show in June! High Desert Art League members Helen Brown, Liz Haberman and Jacqueline Newbold are the featured artists and will be available to meet First Friday art lovers on June 5 from 5-7pm



This venue is open Monday-Friday. Closed weekends. Helen is a member of the Tumalo Art Company in Bend's Old Mill District and will be showing her new work there in July.

Liz paints wonderful animals and figures. Her paintings tell stories the viewer can easily imagine.

Jacqueline was a member of the former Red Chair Gallery and a frequent instructor of watercolor both locally and abroad.



SageBrushers Art Society
117 SW Roosevelt Ave.
541-617-0900
sagebrushersartofbend.com

SageBrushers continues their annual show through June 30 where 50 beautiful landscapes, florals, still lifes and figures, all rendered in the richness of pastels, are on view. The gallery is a great destination for your summertime guests.

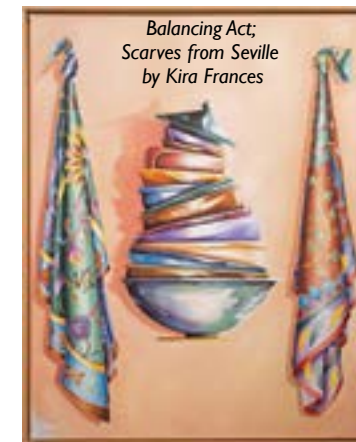
The gallery is open Monday, Wednesday, Friday and Saturday, 1-4pm.

DEDICATED TO ARTS & CULTURE IN CENTRAL OREGON

WWW.CASCADEAE.COM | 541-388-5665

The Stacks Art Studios & Gallery
Old Mill District, Second Floor
404-944-9170
oldmilldistrict.com/art-gallery/the-stacks-art-studios-gallery

Kira Frances is a multidisciplinary artist based in Bend, creating oil paintings, watercolor work, illustration, writing and design-driven pieces that move between fine art and storytelling. Her work embraces curiosity over categories, allowing each idea to find its own form. She has exhibited her work in galleries, embassies and public spaces spanning DC, London and Massachusetts. In Bend, her paintings line the walls of Drop Thesis, a mental health service offering psilocybin-led journeys. Her art also sits at the entrance of Anthony's restaurant. You can find her work at kirafrances.com.



majestic country he has had the privilege of floating through.

Tumalo Art Co. is an artist-run gallery in the heart of the Old Mill District, open seven days a week.

Tumalo Art Company
Old Mill District
541-385-9144 • tumaloartco.com
Painter David Kinker's images of water are featured in his June exhibit, *Rippling Echoes*, opening June 5, from 3-7pm during the Old Mill District, First Friday Gallery Walk.

Avid river rafter and guide, David Kinker paints plein air wherever he goes, and then creates the 'memories reflected', in his studio. Many are large format. His intimate knowledge and experience on streams and rivers all over the world is the subject of the art in this exhibit... a rippling echo of the

Unitarian Universalist Fellowship of Central Oregon
61980 Skyline Ranch Rd.
925-878-9723 • barbaracella.com

The Unitarian Universalist Fellowship of Central Oregon is hosting an exhibit, Full Color, featuring the acrylic paintings of Barbara Hudler Cella this summer. Opening with a reception June 11, Thursday, from 6-7:30pm, the public is warmly invited. The reception includes a brief talk by the artist, and refreshments will be served. The exhibit is on display June 7-August 29.

This is a rare large showing of Barbara's plein air and studio landscape paintings. Known for her luminous landscape paintings, she focuses in on the Central Cascades that have made many hearts soar in awe and bliss. The mountains, forests, rivers and lakes dance across her canvases.

Access is limited, with Sunday mornings from 9-11:30am usually open for viewing. Private tours can be arranged by contacting the artist directly at barbara@barbaracella.com or 925-878-9723.



Wachs Studio
25 NW Minnesota Ave.
(above Thump Coffee)
541-633-0620 • wachsstudio.com
Actual working studio by David Wachs open to the public this First Friday, from 4-9pm. Original paintings from alpine and desert adventures around the western United States, Canada and Europe. All of the images represent a place visited in person on foot, ski or motorcycle in the past ten years of travel. Paintings for sale range from small 5"x7" studies to large canvases scaled in feet dimensions.

SEND US YOUR FIRST FRIDAY PHOTOS!

Send us your photos from your gallery or shop of artists, patrons and hosts to be featured in *Cascade A&E Magazine* each month! Send all photos (and remember to include names) to ae@cascadeae.com.

Got questions?
Call 541-388-5665 or email marcee@cascadebusnews.com.



Hudson and Sophia Turbity admired each piece in the "Make a Wish" group show at Tumalo Art Co. but Nancy Becker's colorful glass birds were Sophia's clear favorites. Photo courtesy of Tumalo Art Co.

Can You Resist This Face?

HUMANE SOCIETY OF CENTRAL OREGON
TO VOLUNTEER OR DONATE
CALL 541.382.3537 • HSCO.ORG

SageBrushers ART SOCIETY INC.

The gallery presents
The Wonderful World of Pastel

Fifty sumptuous pastel paintings by thirty artists
May through June

Pastel by Paul Kneese

Visit us Mon, Wed, Fri & Sat from 1-4PM
117 Roosevelt Ave. Bend, OR
541-617-0900 | sagebrushersartofbend.com

HIGH DESERT ART LEAGUE

www.highdesertartleague.com Art by Janice Rhodes

FIRST FRIDAY REDMOND EXHIBITS

Arome

432 SW Sixth St.
541-527-4727 • aromekitchen.com

Rex Krueger loves to work with wood and “polish it until its natural character glows!” He creates pens, kitchen utensils, candlesticks, urns, toys and more. Each piece is unique with high quality design and construction including that highly polished oil-based finish.

Erin Skeer has a love for gardening and takes the outdoors and turns it into art. She finds inspiration every time she is in nature.

Bill Hunt creates unique animal carvings from locally sourced fence posts and juniper snags.

Cascade Hasson Sotheby's International Realty

535 SW Sixth St.
541-383-7600 • cascadehassonsir.com

Michael Weisker reproduces the brilliant watercolors of his late wife, Kimberlee, in colorful cards and keepsakes.

Susan Yokoyama says, “Clay can ignite the imagination as it starts spinning on the potter’s wheel or molded into a handbuilt sculpture produced from the heart through the hands.” The result is a tea bowl, yunomi or ramen bowl, one for every need, or a decorative vessel of nature.

Carolyn Gaubatz has been working with pottery for about three years and polymer clay for about nine months. She says, “The creative options are endless.”

Lou-Wayne Steiger is an artist who explores and experiences many mediums in the arts. Her main focus has been raku pottery but over the years she has explored textile design, jewelry making, leather crafts, fabric dying, gourd carving and furniture repurposing.

Desert Prairie Boutique

404 SW Sixth St., Ste. 100
541-527-1887 • desertprairie.com

Walter Troutman has a passion for creating with clay. No two pieces are alike or perfect because he is always experimenting with design, color, texture, finish, glaze, shape. Walther says, “It gives me great joy, purpose and satisfaction to be able to express my creativity.”

Dry Canyon Community Art Center

415 SW Sixth Street
drycanyonarts.org

At the Dry Canyon Community Art Center, the June Featured Artist is Dry Canyon Arts Association’s “Chair Emeritus” and Gallery Manager, Mel Archer. Archer is an accomplished glass artist, melting colored glass particles into impressionistic paintings. His subjects shift between luminous still lifes and wide, high-desert vistas. The process of creating a fused glass painting is part precision and part discovery. He teaches his students to plan carefully, then welcome the surprises revealed when the kiln is opened. Come by Dry Canyon Community Art Center from

5-8pm on June 5 to participate in a reception in Mel Archer’s honor and experience some of his glass artwork.

Also at Dry Canyon Community Art Center in June is a brand new exhibition celebrating the country’s upcoming birthday, *America the Beautiful*. Dry Canyon Arts Association members were asked to submit work that spoke to the theme, and the resulting exhibition is inarguably beautiful and fascinating in its widely varied interpretation of the word. Visit the exhibition during First Friday on June 5, or any time during hours of operation in June and July. The Dry Canyon Community Art Center gallery is open Tuesday through Saturday 11am-6pm, with the expectation of First Friday when they stay open until 8pm.

Harcourts The Garner Group Real Estate

444 SW Sixth St
541-383-4360 • thegarnergroupp.com

Raymond Roeder makes purposeful creations from wood providing utility and art.

Debra Roeder, a former art teacher with 25 years experience, works in various media. She often chooses to pursue stonework – lapidary – to bring knowledge and fun to viewers. She also enjoys watercolor to mimic nature’s beauty.

Jay Lowndes creates unique, one-of-a-kind crafted, hardwood pieces that not only accent any room but are also practical for everyday use. He has the knack and experience for creating durable, wooden-wares such as charcuterie and cutting boards, coasters, Lazy Susans, small furniture pieces, quilt hangers, photo-boxes and picture frames. He welcomes custom orders and can personalize pieces as you like it.

Willow Wild

321 SW Sixth St
541-527-4320 • shopwillowwild.com

Wendy Wheeler Jacobs creates what can best be described as portraits of birds, animals, trees, plants, mountains, rocks and other natural elements. While watercolor is her preferred tool, she also enjoys acrylic and colored pencil.

Alta Wey says, “My work explores trauma, emotion and the ways personal experiences shape how I see the world.” Wey uses art as a way to process feelings that are difficult to express in words, turning internal experiences into something visible and tangible. Each piece reflects both struggle and reflection, capturing moments of vulnerability, confusion and healing. Wey states, “Through my work, I hope viewers recognize the unseen emotions people carry and find space for empathy and connection.”

SCP Redmond Hotel

521 SW Sixth Street
541-26-3608 • SCPHotel.com

Converse Fields creates high fired porcelain pottery both decorative and functional. He strives to bring beauty into our community through his use of vibrant glazes and bold forms. Find more about Converse at fieldspottery.com.

Vincenzo Barraco is an enthusiastic birder who loves to share the beauty of nature through brief moments frozen in time with the art of photography.

Sandy Klein’s work explores storytelling through a blend of traditional media, primarily acrylic painting and colored pencil. With a background in illustration, she approaches each piece as a narrative, capturing not just a subject, but a moment, a feeling, or a quiet story unfolding.

Dave Carlson is a blind woodworker who designs and handcrafts items for the home.



Lilies by Mel Archer



Barbara Cella ~ Eric Jongewaard ~ Jared McCormas ~ Kevin Bell ~ Mike Honey ~ Nick Bondeson and Ama Schroeder ~ Pamela Clafin ~ Perry Jacobsen ~ Peter Fullenwider and Caroline Stratton ~ Ron and Anita Kutella
Samantha Denouden ~ Silas Thompson ~ Zack Fagin ~ Bill Lind ~ Brad Harrison ~ Converse Fields ~ Debra Roeder ~ Erin Skeer // Photos by Laurie Pittman, Barbara Cella and courtesy of Dry Canyon Arts Association





Molly Freitag ~ Rex Krueger ~ Richard Ford ~ Rick Thompson ~ Vincenzo Barraco ~ Walter Troutman ~ Joan ~ Karla Proud and Diane Miyauchi ~ Nanci Tangeman and Liz Hoberman ~ Tim Boitano, Heidi Brown and Carolyn Boitano
 Anne Gibson ~ Bill and GiGi Merrill ~ Diane Farquar ~ Jim Sternberg and David Keyes ~ Lee Morrison ~ Leslie Kutz ~ Peter Roussel ~ Scott Corder and Cathleen Calkins ~ The River Stones // Photos by Laurie Pittmon

Art Is a Verb

Mel Archer's Fused-Glass Impressionism

by DINA RHODEN

On two-and-a-half acres of sagebrush and juniper trees outside Redmond, Mel Archer and Colleen, his wife of 55 years, live in an art-filled home overlooking the Deschutes River. Nearby, a low building houses a studio that feels equal parts sanctuary and engine room. Three kilns anchor this room of 1600 square feet. Nearby, shelves carry a confetti parade of small, labeled tubs—more than 2,000 custom blends of colored frit (crushed or ground glass that can be powdery or of coarser textural bits) within easy reach. This is where artist and retired cabinetmaker Mel Archer practices his favorite sentence about creativity: “Art is a verb.”

Archer is no stranger to the study of art, having attended various art colleges. In addition, years of designing and building high-end cabinetry for his Pacific Design Inc. company tuned his eye to proportion and detail. Commissioning glass for clients piqued his curiosity, so he enrolled in a string of classes at Bullseye in Portland — concluding with *Painting with Light* — and the path was set. “After that, I knew I must work in glass,” he says. When Archer began, fusible art glass was a relatively new chapter in studio craft, with Portland’s Bullseye Glass Company pioneering reliable formulations beginning in the late 1970s. Archer studied with glass artist Roger Thomas and learned from the trailblazing techniques of Kathleen Sheard. Fused glass, unlike paint, blends in the kiln. Color comes alive not under brush pressure, but under time and heat, which means each choice is a surprising wager with fire.

Artists worldwide have since explored the possibilities of fused glass, but over a period of six years, Archer embraced the slow science of building a very personal palette. Archer’s studio reads a bit like a laboratory — measured blends, logged formulas, test tiles — yet the outcome is anything but clinical. It’s atmospheric in the vein of celebrated impressionists. You feel dry sage even if you can’t touch it. You see river light and gentle sunsets in the carefully chosen layers of glass.

Archer quickly recognized the kinship between impressionism and frit. If Monet built radiance from small, adjacent strokes, Archer found a glass equivalent: build ambience and settings from specks. The process is a patient kind of choreography. Each composition begins on a sheet of white glass, where Archer places elements as a painter would lay down basic colors on a canvas. The first firing at 1485 degrees sets the tone — edges round, particles knit, and certain textures soften into the suggestion of brushwork. Then the studio’s essential ritual: place, think, adjust, and fire again. Some works return to the kiln half a dozen times, each trip clarifying what should recede and what should come forward.



The subjects shift between luminous still lifes and wide, high-desert vistas. Archer created a still-life pear using the frit he created and earned recognition as a top-20 finalist in the 2008 Bullseye’s international Emerge competition, where he competed against top glass artists from all over the world. Landscapes, meanwhile, indulge his love of Central Oregon light. Stringers whisper into grasses; mottled blues deepen into river current; a sky and landscape of fall trees become a chorus of celebration.

If there’s a craftsman’s backbone to the work, it shows in the way Archer logs formulas and tests hypotheses. A lifetime of joinery gives the pieces their quiet precision. But the artist in him makes room for surprise. He embraces that collaboration, teaching students to plan carefully and then to welcome the moment when heat teaches its lesson. “The world doesn’t need another watercolor — or another piece of fused glass,” he says with a smile. “What matters is the creative action inside the maker.”

Community has always been part of Archer’s creative life. Archer has been the president of the (very active) Board of the Dry Canyon Arts Association in Redmond for four years and has been key in moving the organization from 30 members to a current 300 and growing. His dedication for the organization to gain a community art center and permanent space for classes to bring the community closer together became a reality this past December.

Retirement from cabinetry didn’t slow Archer down. With more time in the studio, more time to lead and guide various committees and boards and actively making art a larger part of Redmond’s elementary school system, he is as busy as ever.

See Mel Archer’s work on display throughout the month of June at the Dry Canyon Community Art Center at 415 SW Sixth Street in downtown Redmond, or join him at the Art Center for a celebration of his work during First Friday, June 5, between 5-8pm.

melarcher.com

What in the world are Encaustics?!

by JANICE RHODES

My medium, encaustic, is one of the least recognized techniques in art galleries today. However, its origin dates back centuries.

Recorded history tells us that about 2,000 years ago in ancient Egypt, encaustic was applied to Egyptian Fayum mummy portraits. These masks were found in tombs for the royals and are exhibited in museums today. Like ancient drawings in a cave, encaustic work is truly durable and highly archival.

The word encaustic means “to burn in” in Greek. The medium is a mixture of pharmaceutical-grade beeswax, tree resin and pigments. This is my basic process: I melt the wax and crystalized resin in a slow cooker to near 200°. I then pour this clear liquid in about 20 small canisters of pigments, each color is then kept molten on a large hot plate. This is my pallet. Then using a brush, I apply the colored wax onto a birch board to create my painting. I have to continually heat each brush stroke with a heat gun, fusing it to the layer beneath while also manipulating the wax during the creative process.

How did I get into this unique medium?

It all started about 17 years ago when I took an encaustic class at the old Art Station in the Mill District in Bend. The technique being demonstrated was abstract, but I eventually began to learn how to control my process so that I could paint realistic images. The encaustic technique is actually creating something from a hot liquid to a cold, solid, final image. It is very challenging, but also so rewarding. The results are luminous and very textural.

Over the years, I have enjoyed going with the flow of this unique medium.

Janice Rhodes is a member of the High Desert Art League and the Dry Canyon Art Association. She has a solo show at the Oxford Hotel for the month of June, 2026.



Janice Rhodes



New Recruit



Vaquero



Long-Legged Beauties

America the Beautiful

A Celebration at the Dry Canyon Community Arts Center



Porcelain vases by Converse Fields



Indigenous, encaustic by Janice Rhodes



Autumn by John Runnels

With wars overseas, headlines full of shouting, and a nation that often feels exhausted by its own divisions, the Dry Canyon Arts Association’s (DCAA) newest exhibition, *America the Beautiful*, arrives not as propaganda or nostalgia, but as something steadier: a room full of artists celebrating what still matters. More than 200 works were submitted, but only a little over 100 could fit into the gallery space, requiring careful and inclusive curation.

Walking through the rooms, viewers encounter not one version of America, but many. Pamela Beaverson’s *High Desert Grassland* captures a doe and her fawn standing alert in tall Central Oregon grasses. Nearby, Janice Rhodes’ encaustic portrait *Indigenous* glows with layered wax and shadow, the seasoned woman’s face carrying the gravity of memory itself. John Runnels’ oil painting *Autumn* arrives in thick, muscular brushstrokes celebrating the textures and colors of fall.

Other artists honor craft traditions carried across generations. New DCAA member Converse Fields contributes high-fired porcelain ceramic vases in vivid greens and blues, their glazes, “Made to bring joy to those who interact with the art,” he says. Ken Fisher’s wood turned bowls draw inspiration from Southwestern and Indigenous basket patterns, their curved surfaces holding both precision and warmth.

For collagist Dina Rhoden the exhibition became a meditation on courage, honoring the two Revolutionary War captains in her family line. “Only about 30 percent of the colonists were in favor of separating from Britain,” she explained to Exhibition Committee Member, Laura Fouts. “I challenged myself to capture that bravery in a bold but colorful way.”

What art does best during uncertain times is slow us down long enough to see one another again. It helps us breathe together again. A painting cannot stop a war. A ceramic vase cannot fix politics. Art reminds us that a country isn’t only built from laws and arguments. It’s built from imagination, sacrifice, memory, land, craft, risk, beauty, and the stubborn human desire to make something worth passing on.

The *America the Beautiful* exhibition begins June 1st and continues through the month of July. Opening festivities will coincide with First Friday, June 5, between 5-8pm at the Dry Canyon Community Art Center at 415 SW Sixth St. in Redmond.

drycanyonarts.org/art-center-about



High Desert Grassland, oil by Pamela Beaverson



Turned bowl by Ken Fisher

NEW PERSPECTIVE FOR JUNE

by EILEEN LOCK

Conversations on the 1st are emotional and could lead to decisions and confusion over the next few days. Be patient after the 4th as some things take longer than expected. Opportunities on the 9th seem like a dream come true yet more decisions will be required.

Relationships are changing after the 12th and it’s important to think about your own happiness first. The New Moon on the 14th brings unexpected changes and it will be important to follow your heart. Trust your intuition on the 16th as it invites you to let go of the past. Believe in your ability to move forward on the 19th and make a plan to do so.

The Summer Solstice on the 21st is a time to be honest with yourself about how you feel. Consider your options on the 22nd and 23rd before

making an important decision on the 25th. Opportunities on the 27th require you to take steps forward in a new direction. The Full Moon on the 29th is a time to hold your words and be willing to wait and see what happens. Do what makes you happy on the 30th and remember how important this is.

Love and Light Always, Eileen Lock

Clairvoyant Astrologer / Spiritual Medium

1471 NW Newport Ave., Bend, Oregon 97703 • 541-389-1159

Listen for the song in your heart, find the melody and dance to the music.

eileenlock.freesevers.com • oneheartministry.freesevers.com

Toriizaka Art Presents an Exhibition of

Katazome Works

by Karen Miller



A Resting Place



Moonsetting on Mount Jefferson



Poplar Leaves



The Tree

Toriizaka Art is pleased to announce Karen Miller's katazome textile exhibition on view from June 10 through July 15. The exhibition highlights Miller's exploration of traditional Japanese resist-dye techniques through a contemporary artistic lens focusing on the beauty of the landscapes and flora of Central Oregon.

Katazome, a centuries-old Japanese stencil-dyeing method traditionally used in textiles, employs hand-cut stencils and rice-paste resist to create layered patterns and richly nuanced surfaces. Miller's practice honors these historic processes while expanding their possibilities through innovative compositions, subtle color relationships, and a distinctly personal visual language.

Karen Illman Miller's path to katazome reflects a lifelong dialogue between science, nature, and artistic practice. Raised in the San Francisco

Bay Area in a family that valued both scientific inquiry and the arts, Miller was deeply influenced by her grandfather, early naturalist Trevor Kincaid, who worked in Japan in the early twentieth century, and by her mother, an artist-naturalist known for detailed botanical painting. Childhood experiences exploring tidepools and the Pacific coastline fostered an enduring fascination with biological form and pattern that continues to shape her imagery today.

Before fully committing to art, Miller built a distinguished career as a marine biologist and physical biochemist. She earned a PhD in zoology and spent two decades researching oxygen-binding proteins in octopuses, eventually joining Oregon State University. Throughout her scientific career, aesthetic curiosity remained central to her work; the structures and rhythms of

living systems became a foundation for her artistic language.

Miller encountered katazome in 1994 after enrolling in an indigo dyeing workshop in Roseburg, Oregon. Cutting her first stencil proved transformative. She later studied with American katazome master John Marshall and traveled to Japan, working in a Kyoto workshop connected to renowned textile artist Keisuke Serizawa. While informed by traditional methods, much of her expertise was developed through decades of disciplined experimentation.

Nature remains the primary source of Miller's imagery. Drawing on plants, marine organisms, branching structures, and organic pattern systems, her work balances biological accuracy with abstraction. By combining traditional technique with contemporary sensibilities, Miller's katazome works reveal the human touch embedded

within each stage of production — from stencil cutting to dye application.

A reception will be held at Toriizaka Art on June 26 from 4-7pm, offering visitors an opportunity to meet the artist and learn more about the katazome process.

About Toriizaka Art:

Toriizaka Art is dedicated to presenting exhibitions that foster dialogue between traditional and contemporary artistic practices, with a focus on cross-cultural exchange and material-based work. Through exhibitions, collaborations, and public programming, the gallery supports artists who expand the boundaries of craft and fine art.

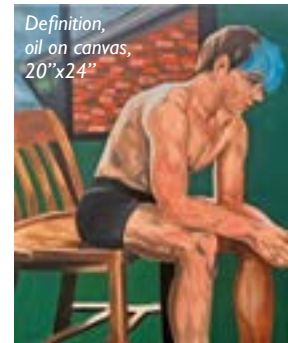
Hours are Monday-Saturday, 11am-4pm. For additional information contact Karen Thomas at kthomas@toriiizakaart.com or 650-580-6551.

toriiizakaart.com

Young Artist's Work Selected for

2026 Oregon High Desert Classics Poster

by EVA GILL, Marketing Creative — J Bar J Youth Services



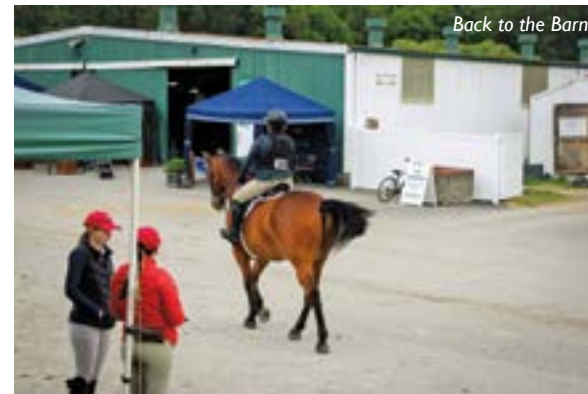
Definition,
oil on canvas,
20"x24"



Reflecting Back,
oil on canvas,
5"x7"



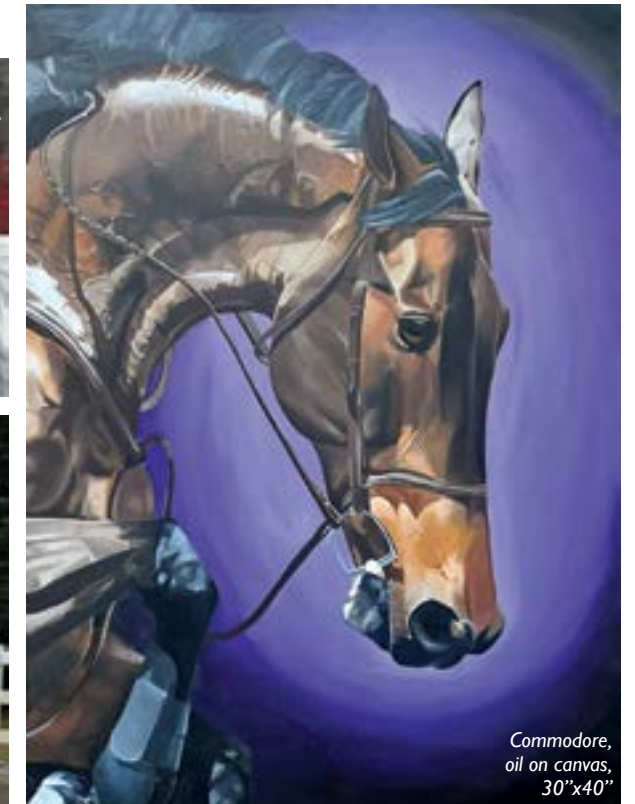
Protection,
oil on canvas,
36"x40"



Back to the Barn



45 Seconds
Art and photography
by Maya Daniel



Commodore,
oil on canvas,
30"x40"

When riders and spectators arrive at this year's Oregon High Desert Classics (OHDC) horse show, they will be welcomed by the striking image of a familiar horse captured mid-jump, a piece created by young artist and OHDC competitor Maya Daniel.

Maya, currently studying fine art and psychology at Lewis & Clark College, was selected as the featured artist for the 2026 Oregon High Desert Classics poster. Her painting, *Commodore*, portrays her own hunter horse of the same name and reflects both her deep connection to horses and an evolving artistic voice. "I've always been drawn to horses as subjects because I spend so much time around them," Maya said. "I think knowing them so personally helps me capture their character and spirit in a way that feels honest."

Maya has studied art most of her life, becoming especially dedicated to her work during the AP Art program at Ida B. Wells High School in Portland. While she works across several mediums — including gouache, ink and watercolor — oil painting remains her favorite.

She describes *Commodore* as a turning point in her artistic journey, representing a new direction she plans to continue exploring in future work. She told us, "*Commodore* was a tough but rewarding piece. It was my first ever realism piece, but it really showed me my own capabilities as an artist and has inspired me to continue to push myself artistically."

Her connection to horses extends beyond the canvas. After first sitting on a horse at four years old, Maya began riding seriously at age nine and has been immersed in the equestrian world ever since. Maya has been part of

the Oregon High Desert Classics community since 2021, participating along with her trainer, Rebekah Swan of Swan Training, a longtime supporter and sponsor of the event.

Held July 8-12 at J Bar J Boys Ranch in Bend, the Oregon High Desert Classics brings together world-class equestrian competition, family-friendly entertainment and a vibrant community of riders, trainers, artists and horse lovers from across the western United States and Canada.

More than a celebrated summer tradition, the horse show also serves as a major fundraiser for J Bar J Youth Services and its programs supporting vulnerable youth throughout Central Oregon. Community members are invited to attend, visit the vendor booths, sponsor or participate in this year's event.

Since 1968, J Bar J Youth Services has grown to meet the changing needs of young people facing challenges including homelessness, family instability, foster care involvement and trafficking. Through shelter, housing, mentoring, counseling and supportive services, the organization helps youth build stability, resilience and hope for the future.

For Maya, having her work selected for this year's poster feels especially meaningful because of the connection between the equestrian community and the mission behind the event. "There's something really special about being part of an event that brings people together around horses while also supporting young people in the community," she said. "That makes it feel bigger than just a horse show."

Instagram: [@mayadanielstudio](https://www.instagram.com/mayadanielstudio) • oregonhighdesertclassics.org

Michele Michael

for 2026 Season

Sunriver Music Festival has selected Michele Michael's *Strawberry Skies* as its featured artwork for 2026.

Each year, the Festival features an artist local to Central Oregon for the season's poster. Artists were invited to submit their artwork for consideration and a jury of professional artists from the Artists' Gallery Sunriver assists in making the final selection. Michael's 18x24" acrylic on canvas painting, which has been custom framed by Eastlake Framing, will be auctioned at the Raise the Baton fundraising party on July 18 in Bend. Details and tickets at sunrivermusic.org.

Fine art quality reproductions of this work will grace the cover of the program magazine for the 49th season of Sunriver Music Festival. Posters are available for \$35. Framed posters are \$85. Notecards with Festival art are \$25 for a pack of ten available at the Sunriver Music Festival office. Clothing and other merchandise are also available online at sunrivermusic.org/merch. Call 541-593-1084 or email tickets@sunrivermusic.org with merchandise questions or purchasing information.

About Michele Michael

In the artist's words:

"I was raised in the countryside of Ohio farmlands and spent my youth creating everything from hand-drawn paper dolls to detailed illustrations in Microsoft Paint. I spent most of my teenage years and 20s dismissing my creativity, instead studying photojournalism and working odd jobs. I moved out west to Olympia, Washington in 2009 and immediately fell in love with the natural beauty of the mountains, rivers and coastlines of the American West, as well as the outdoor recreation community. I started working at REI, and did so for over ten years, which gave me a business mindset, an intimate knowledge with retail, and most importantly, the introduction to my husband and business partner, Jeff.

"That job also took me to multiple locations in Washington, Alaska and Oregon. After living



Michele Michael



Strawberry Skies by Michele Michael

Sunriver Music Festival
49th SEASON AUGUST 10-20, 2026 SUNRIVER & BEND, OREGON

all over the Pacific Northwest, I deepened my love of the outdoors and was drawn to bigger adventures. However, I did not feel compelled to capture the beauty of the natural world in art until Jeff and I spent a year traveling the world. With the rise of social media, and being exposed to artists of all kinds, I felt inspired to finally paint and draw again. I started posting my small sketches on Instagram and was encouraged by friends and strangers. I got my first commission while living in New Zealand; it was a request to draw... the Three Sisters mountains! When we returned stateside, we settled in my husband's hometown of Bend, and I started my art business shortly thereafter.

"I started designing stickers and got my first retail account in 2018. My art and business has slowly grown, and I am proud to have my art in many local shops, as well as seven National Parks (and counting!). Along with my husband, we support our family with our business. I still live

in Bend (in Three Rivers area now) with Jeff, our two young children, and our mutt dog. In 2022, I made the leap to pursue art full-time. I feel like the luckiest gal in the world to make art for a living!"

Sunriver Music Festival's 2026 summer season will be held in Bend and Sunriver from August 10-20. Events are at the iconic Tower Theatre in downtown Bend and the historic Great Hall at Sunriver Resort. Artistic Director and Conductor Brett Mitchell will lead world-class orchestra musicians and acclaimed soloists in a remarkable 49th season.

Sunriver Music Festival is a year-round nonprofit presenting world-class orchestral performances and supporting music education throughout Central Oregon. Through a commitment to excellence, collaboration and innovation, the Festival seeks to foster a lifelong love of classical music in its many diverse forms.

sunrivermusic.org • michelemichaelart.com

Behind Every Painting There is A Story

Mary Marquiss has been an art teacher and artist for 30 years and is the forthcoming author of *Behind the Painting – An Artist's Memoir*. Through serious life challenges, including divorce, family suicide and cancer, Marquiss discovered a relationship with her art in the form of a circular language. If you have ever faced what felt like insurmountable life challenges, her stories and paintings will inspire you.

With a degree in psychology, and both an artist and writer, the most provocative element to her paintings is their personal content.

In this intimate memoir, Marquiss tells the personal stories that inspired her paintings. Created across three decades, each work is in response to both the light side of life and the serious challenges she navigated, including divorce, family suicide, a stroke and cancer. Her art and stories are interwoven – they chart the course of a woman on the road to adventure and deeper self-discovery.

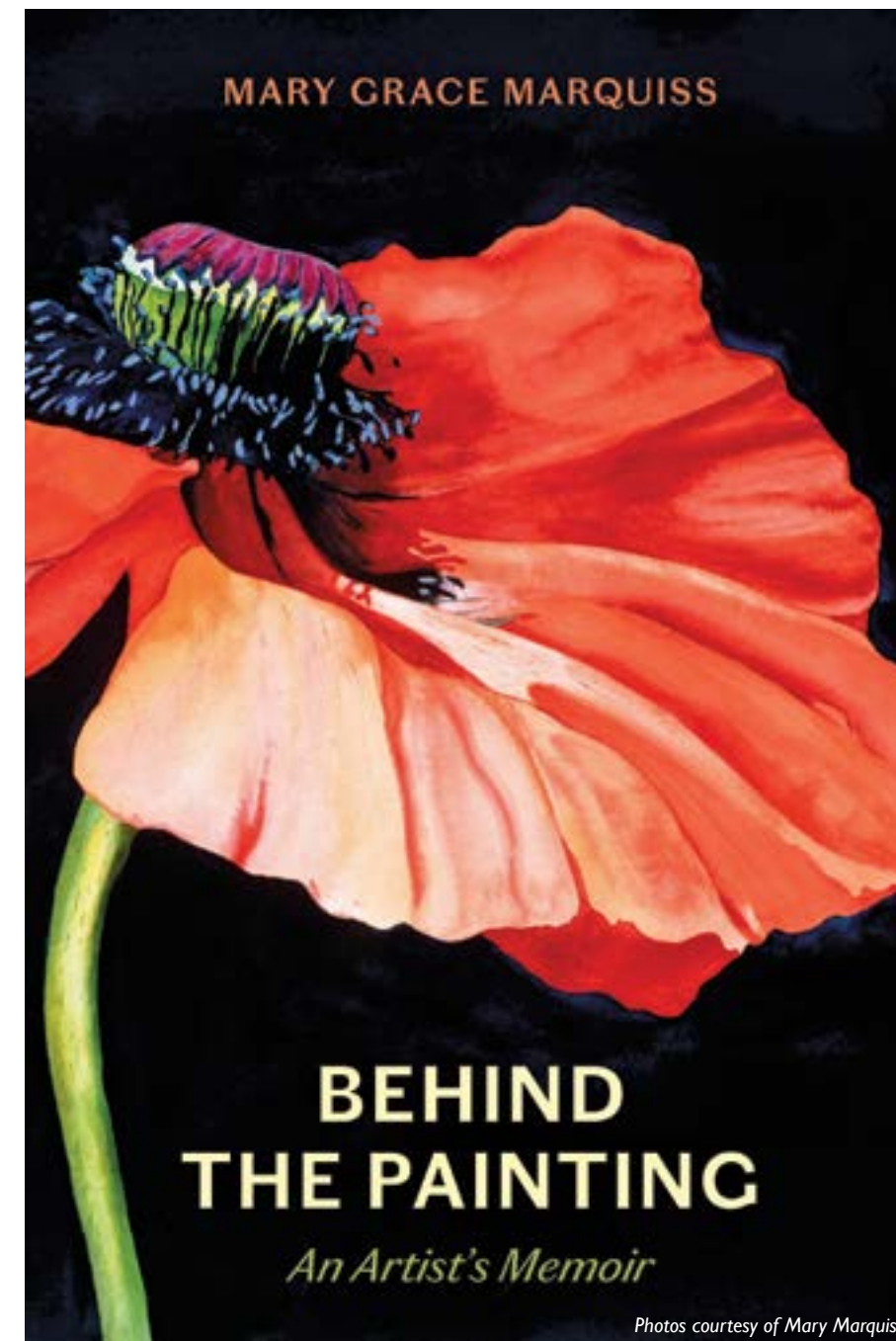
Behind the Painting shines a light on the artist's process and is a testament to the transformative power of creativity, revealing how the deepest emotions can be forged into lasting beauty.

Marquiss developed her interest in art as a child, surrounded by the lush beauty of Oregon. Originally from Corvallis, she is a fifth-generation Oregonian and has lived in Bend for 34 years. She attended both the University of Oregon and UCLA, earning her bachelor of science degree in psychology. After graduating, she became the admissions director for a private psychiatric hospital in Reno, Nevada, owned by HCA with 500 hospitals worldwide. After two years as the hospital admissions director, she was promoted to marketing director and then became a marketing consultant for HCA.

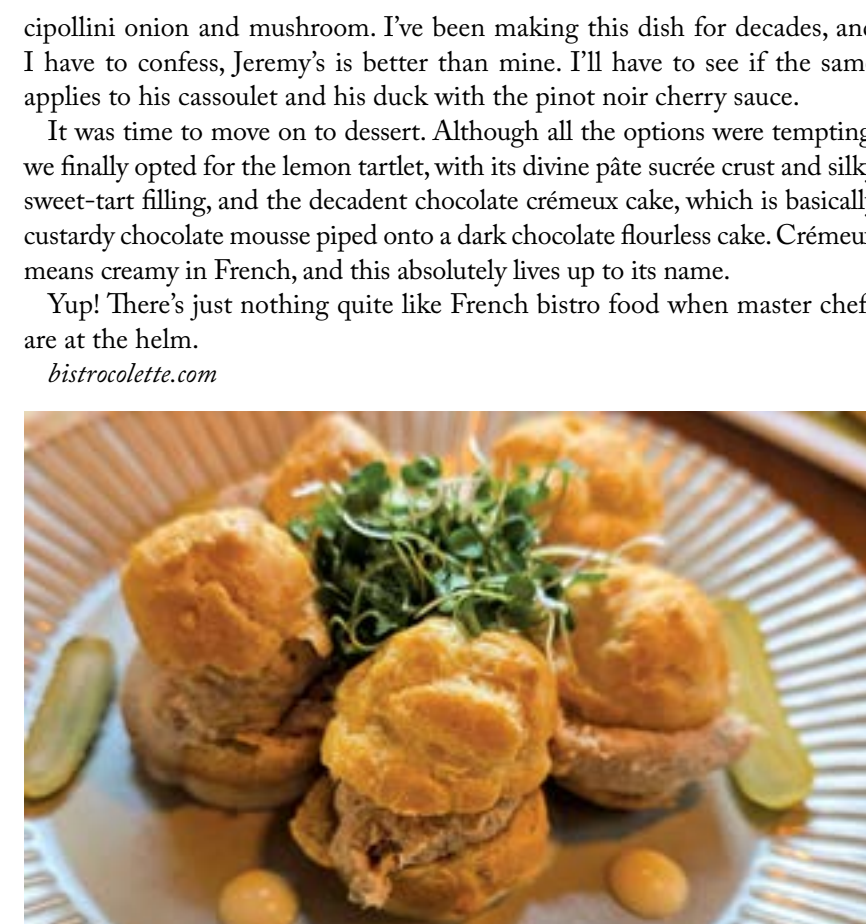
In 1995 she moved to HCA's corporate offices in Nashville to become the product manager for Seniority – a benefit that only comes with age – which was franchised in hospitals across the country. When her daughter was born 38 years ago, she left her corporate career and returned to her love of art and writing. "I focused primarily on watercolor because it can be playful, has a beautiful transparency and teaches me about the challenge of controlling this medium – when to take it and when to let go – as in life," she explains.

Marquiss has written and illustrated two cookbooks and taught art and design classes to both adults and children in Bend for over 30 years. Combining her art and writing, *Behind the Painting* holds ten of her paintings with a story interwoven behind each one. This book takes the reader on an adventure with both the high notes in Paris and finding love late in life through the challenges she faced.

Her original art and book information can be seen at marymarquiss.com.



Mary Marquiss



Bistro My Heart

by LINDEN GROSS — One Stop Writing Shop

I've hungered for a French bistro to hit Bend for the 20 years I've lived here. That's what happens when you grow up in Paris. So, I was downright ecstatic to hear that Jeremy Buck, Salute Restaurant and Bar's co-owner and chef, and his co-owner wife, Lian Schmidt, had launched Bistro Colette. If their French comfort food was as good as their Italian offerings, I'd be one happy camper.

Well, it is, and I am. The fact that they slid into the old Flights Wine Bar and retained the same warm, welcoming décor doesn't hurt a bit.

Buck and his wife may have kept the wine bar vibe, but they've added a full bar, so my friend and I started our evening with two delicious cocktails—a French 75 and a Boulevardier—before moving on to wine. I love Bistro Colette's warm herbed olives, which I'd had several weeks prior. This time, however, we skipped those in favor of the profiteroles filled with pork rillettes and spiked with Dijon mustard, as well as the fried serrano ham croquettes served with bechamel and slices of cornichon. In short, pig on pig, and both delightful. What's not to like about perfectly seasoned creamy bites with subtle herby back notes?

The Asparagus Mimosa was just as lovely. The sweet, crunchy asparagus, salty capers and earthy roasted radish, served with an ever-so-slightly sweetened vinaigrette, were balanced by the chopped hard-boiled egg and swirl of soft whipped ricotta.

While I love that you can build your own charcuterie board from half a dozen meat and pâté offerings and that the restaurant offers moules frites (steamed mussels with french fries) and raclette, we decided to explore two other quintessential bistro classics.

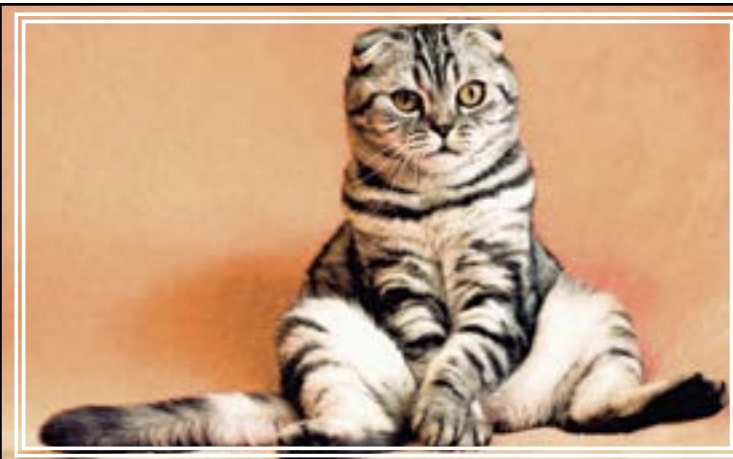
The pan-fried sole à la Meunière had a light crisp on the outside thanks to the brown butter it had been cooked in. In a perfect world, the delicate, lemony filets would have been served on a bed of mashed potatoes or parsnip puree since the rice pilaf did nothing for the dish. Even so, I would order it again.

I had no complaints about the coq au vin. The tender red-wine-braised chicken was infused with the flavors of bacon,

Bistro Colette
 1444 NW College Way, Bend
 541-728-0753
 bistrocolette.com
 Tuesday-Saturday, 3:30-8pm



Photos courtesy of Bistro Colette and One Stop Writing Shop



Can You Resist This Face?

HUMANE SOCIETY OF CENTRAL OREGON

TO VOLUNTEER OR DONATE
CALL 541.382.3537 • WWW.HSCO.ORG

HIGH DESERT CHAMBER MUSIC

Presenting Sponsors:
Washington Trust Bank
KIMBERLY M. LANE
Facebook
Instagram
YouTube

2025-2026 Season

HDCM Concert Series: **TEKALLI DUO**

Dynamic sibling duo from New York - Central Oregon debut!

Concert Sponsor:



June 14, 2026, 4:30pm
Unitarian Universalist Fellowship



TICKETS AVAILABLE BY PHONE, ONLINE, OR SCAN QR CODE!
541.306.3988 / HighDesertChamberMusic.com

20th Big Ponderoo 26

JUNE 26 & 27

THE CALIFORNIA HONEYDROPS
STEEP CANYON RANGERS • FRUITION
MOUNTAIN GRASS UNIT • BIG RICHARD
THE RUMBLE FT. CHIEF JOSEPH BOUDREAUX JR.
BRONWYN KEITH-HYNES • DAMN TALL BUILDINGS
PIXIE & THE PARTYGRASS BOYS • BOY GOLDEN
 AND MANY MORE!



VILLAGE GREEN PARK • SISTERS • OREGON

& FREE KICK-OFF CONCERT ON THURS. JUNE 25
WITH THE RUMBLE & WOLF JETT AT 6 PM!

TICKETS AT BIGPONDEROO.COM

Acclaimed Pianist to Open Sunriver Music Festival's

49th Summer Concert Season

by JON F. THOMPSON

What does genius look like? It might look a lot like Sunriver Music Festival's guest artist Michelle Cann, a two-time Grammy winner and one of the most sought-after artists of her generation.

She's coming to Central Oregon for Sunriver Music Festival's opening concert August 10, at which she will perform Ludwig van Beethoven's beloved Piano Concerto No. 4 in G Major.

Michelle Cann doesn't just play piano. She owns it. She dominates it as she uses it to extract every scintilla of meaning of the composer's intent. That's a factor that makes her special. Another factor is that while she plays, she also listens.

Brett Mitchell, artistic director and conductor of Sunriver Music Festival says of Cann: "She's a diligent performer and an incredibly sensitive musician, a real collaborator. She makes chamber music with the orchestra; she listens to the orchestra and responds to it, just as the orchestra responds to her."

Mitchell says he finds Cann to be "an artist's artist. She's a probing personality, someone who asks a lot of questions. So many pianists are interested in flash for flash's sake. She has flash, but she's deeper than that."

There's more to a great performance than just playing the music, notes Mitchell, himself a formidable pianist. There is also respecting the composer's intent.

"If your sound stays the same from one composer to the next, that's a case of making the composer serve you," Mitchell explained. "Michelle is intent on serving the composer. If I heard ten pianists playing Mozart, for instance, I certainly could pick out Michelle."

Cann's ability to probe the intent of composers as diverse as Mozart and Florence Price, a Black 20th-century American composer, is especially impressive because their styles are so different, Mitchell said. "The musical material is so different. The extraordinary thing is they require such different musicians to perform them. Just because you can perform one doesn't mean you can perform the other. The fact that Michelle can do both in an equally convincing fashion is testament to her musicianship," Mitchell said. That musicianship is one reason why Mitchell is looking forward to Cann's performance in Sunriver.

"I think Beethoven's Fourth is my favorite Beethoven piano concerto, the most special," Mitchell added. "I can't wait for everyone to experience her work."

Cann is not just a spectacular artist. She's also an accomplished scholar who holds bachelor's and master's degrees in piano performance from the Cleveland Institute of Music. She teaches at the Curtis School of Music in Philadelphia, where she holds the Eleanor Sokoloff Chair in Piano Studies, and is a member of the piano faculty of the Manhattan School of Music in New York City.

Michelle Cann will perform with the Festival Orchestra during Sunriver



Michelle Cann. Photo by Titilayo Ayangade


Musical Festival's opening concert on Monday, August 10, at 7:30pm in the Sunriver Resort Great Hall. In addition to Beethoven's Piano Concerto in G Major, the concert will celebrate America's 250th anniversary by performing Joan Tower's Made in America and Josef Hayden's Symphony No. 101 in D Major, *The Clock*.

Tickets for all Sunriver Music Festival's August 2026 season concerts are available at sunrivermusic.org or by calling 541-593-1084. The Festival opens August 10 at the Sunriver Resort Great Hall and closes August 20 at the Tower Theatre in downtown Bend.

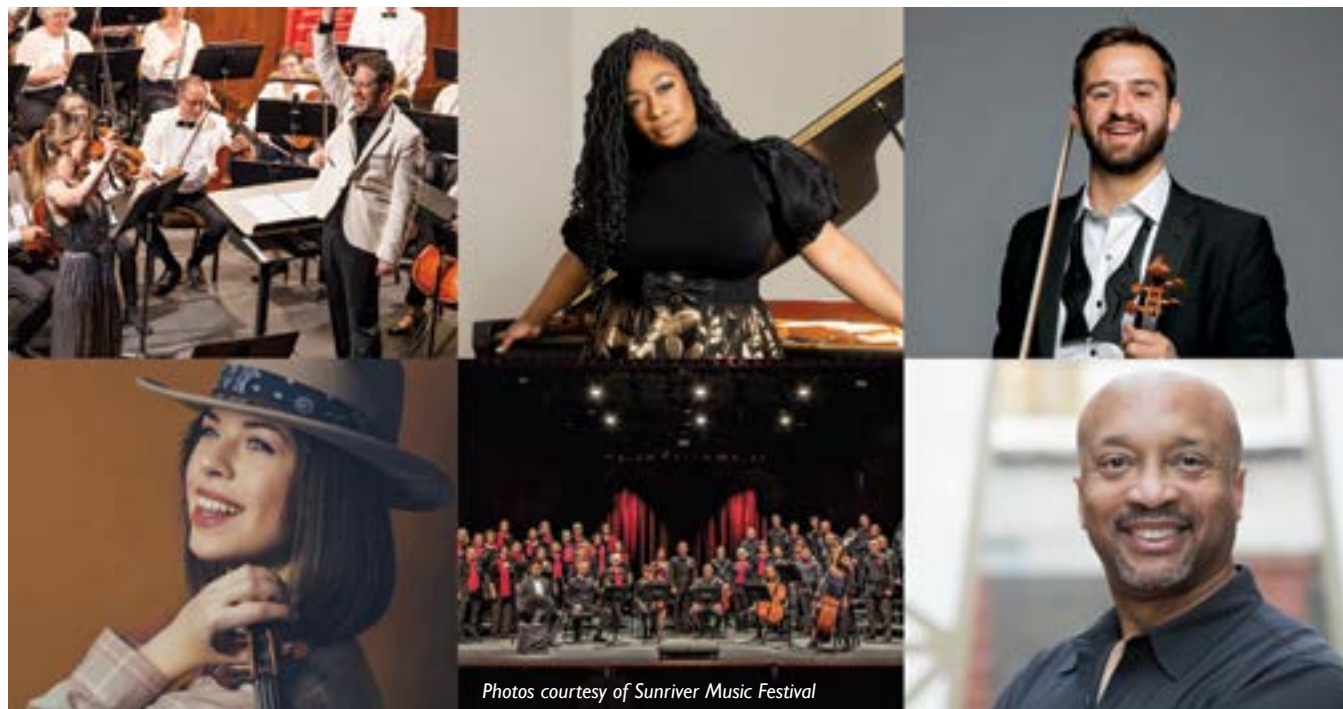
Sunriver Music Festival is a year-round nonprofit presenting world-class orchestral performances and supporting music education throughout Central Oregon. Through a commitment to excellence, collaboration and innovation, the Festival seeks to foster a lifelong love of classical music in its many diverse forms.

sunrivermusic.org

CAN YOU
Resist
THIS FACE?



HUMANE SOCIETY OF
CENTRAL OREGON
TO VOLUNTEER OR DONATE
CALL 541.382.3537
WWW.HSCO.ORG
*Make your house a home.
Adopt today.*



BREEDLOVE 
WAREHOUSE SALE
SATURDAY JUNE 13TH, 10AM-4PM
UP TO 50% OFF SELECT MODELS
GRAND OPENING CELEBRATION
NEW RETAIL SPACE FOR MERCHANDISE AND GUITAR GEAR

EVERY \$100 SPENT GETS AN ENTRY TO THE GUITAR GIVEAWAY RAFFLE

COMPLIMENTARY HOT DOGS AND BEER!! FOR ALL ATTENDEES

GUITARS, CASES, AND BIG BAGS AT ALL PRICE POINTS

BE LOVE BREEDLOVE

FREE BREEDLOVE HAT FOR THE FIRST 100 PEOPLE!

www.breedloveguitars.com (541) 385-8339
61573 AMERICAN LOOP IN BEND

Sunriver Music Festival Tickets Open Now

From August 10-20, 2026, Sunriver Music Festival presents its 49th season in two spectacular, historic Central Oregon venues—the Sunriver Resort Great Hall and the Tower Theatre in downtown Bend. Performances feature world-class orchestra musicians and renowned soloists, led by Artistic Director and Conductor **Brett Mitchell**. The Festival includes four classical concerts, a pops concert, and a family concert, each with the full Festival Orchestra and featured soloists of great acclaim.

The **Raise the Baton** fundraising party is on **July 18** at the Unitarian Universalist Fellowship of Central Oregon in Bend. Help make the music happen while enjoying performances and conversations with Young Artists Scholarship recipients—some of Central Oregon’s most advanced young musicians. Hosted by **Maestro Brett Mitchell** and **Auctioneer Molly May of Marquam Agency**, this is sure to be a fun evening, with lively auctions, paddle raise, entertainment, and delicious dinner and drinks. **Visit sunrivermusic.org today to reserve your seat.** The Raise the Baton paddle raise directly funds the Young Artists Scholarships.

June 5 is the **Young Artists Scholarship Concert**. This free concert is an inspiring hour featuring several of this year’s impressive scholarship recipients. Free admission for all, 7pm, Community Bible Church at Sunriver, 1 Theater Drive.

Patrons who purchase the full **five-concert series** of classical and pops concerts receive a 10% discount. Tickets start at \$45; tickets for age 25 and under are \$25; and, thanks to the **Young Listeners Guild**, FREE tickets are available for ages 17 and under with the purchase of any regularly-priced ticket. Details and tickets at sunrivermusic.org or 541-593-1084.

Sunriver Music Festival is a year-round nonprofit presenting world-class orchestral performances and supporting music education throughout Central Oregon. Through a commitment to excellence, collaboration and innovation, the Festival seeks to foster a lifelong love of classical music in its many diverse forms.
sunrivermusic.org • 541-593-1084



Sibling Synergy

The Musical Journey
of the Tekalli Duo

by PHIL MACHONIS

On Sunday, June 14, the Tekalli Duo will make their Central Oregon debut to conclude High Desert Chamber Music’s 18th season. I had the chance to speak with the duo — brother and sister Suliman and Jamila Tekalli — about their upbringing and lives in music, what sparked the formation of the Tekalli Duo, and music that personally means a great deal to them.

Jamila and Suliman both took up their respective instruments, piano and violin, not so much by choice but, as Suliman told me, “It was one of the many things our mother had us do to keep us occupied.” Suliman mentioned that he never really had strong feelings about the violin one way or the other until elementary school, when he realized music was going to be an important part of his life. In fact, both told me that music was something that never really left them and was always central to their lives, even while growing

up. As Jamila put it, “Even through slightly rebellious times in high school, I always stayed with music.”

Both have had some amazingly unique musical experiences. In 2018, Suliman traveled to Novosibirsk, Russia, with the Sejong Soloists. His first violin teacher was from there, so he took the opportunity to gain a sense of what his teacher described life in Soviet Russia to be like. The two also had the opportunity to travel to pre-revolution Libya through the U.S. Embassy as musical ambassadors. “We had a chance to visit a music class at Tripoli University, and perform and interact with the students. It really affirmed music’s power to transcend language, politics, and borders.”

Forming a violin and piano duo as a brother-and-sister team may seem obvious, but it was not always so. “As kids, we had a fun time listening to music together, with and without our instruments.” In middle school,

Suliman’s teacher suggested they begin playing together, and they quickly realized they had a passion for it. “After college, we began branching out in our musical exploration, discovering more contemporary music through commissions and our own research. We also became interested in finding ways to bring music from our heritage into our repertoire.” When they launched their first album, *Duality*, they formally named themselves the Tekalli Duo.

Both Jamila and Suliman love chamber music and have a wide range of favorites — from Ravel and Prokofiev to more modern 20th-century composers, as well as the classical masters. Suliman told me that the music of Sergei Prokofiev, particularly the Third Piano Concerto, is a favorite of his. “I suppose it’s weird that it wouldn’t be a piece for violin, but perhaps it is easier to be affected and inspired by music that you can simply enjoy listening to rather than

working hard to create.”

In Jamila’s case, the music of Maurice Ravel is especially significant to her. “From the mentors and teachers who have illuminated his style and aesthetic, as well as my own journey learning and studying his music through my dissertation on his work *Gaspard de la nuit*, his acknowledgment of the past and the hauntingly medieval world paired with a love for jazz is something that deeply resonates with me personally.”

Please join us on Sunday, June 14 at 4:30pm at the Unitarian Universalist Fellowship for this electrifying performance featuring works by Mozart, Ravel, Stravinsky, and more. A concert preview will begin at 3:45pm. This concert is brought to you by Drew Family Dentistry. Tickets are available through High Desert Chamber Music by phone or online.

Come Hear the Music!

highdesertchambermusic.com

Pulitzer-Winning

Rabbit Hole

Comes to Bend with Unique Immersive Experience Series

Ellipse Theatre Community (ETC) announces its June 2026 production of *Rabbit Hole* by David Lindsay-Abaire, directed by Lilli Ann Linford-Foreman. Performances run June 4-14 at Open Space Event Studios.

Winner of the Pulitzer Prize for Drama, *Rabbit Hole* is a deeply moving story about a family navigating unimaginable loss. With compassion, honesty, and moments of unexpected humor, the play explores grief, memory, and the complicated path toward healing. Director Lilli Ann Linford-Foreman notes that “at heart, *Rabbit*

Hole is about finding a way through heartbreak to reconcile what was with what is, on the way to what can be.”

This production is part of ETC’s Immersive Experience program, designed to extend the impact of the play beyond the stage. Throughout the run, audiences and

community members will be invited to participate in a variety of reflective and creative offerings centered on themes of loss, resilience, and hope. These experiences will include interactive art opportunities, collaborative creative projects, facilitated conversations with community leaders and mental health professionals, and post-show discussions with the cast and creative team. Together, these events aim to create space for dialogue, personal reflection, and shared expression, fostering meaningful connection within the community. Funding for these programs is made

possible through contributions from World Muse, Peaceful Presence, Partners in Care, NAMI Central Oregon, ClearPath Healthcare, Mark Jamnik, IBM, and the Tower Theatre Foundation.

Rabbit Hole stars Makenzie Whittle, Chase Johnson, Hilda Beltran-Wager, Jamie Speed and Warren Schweitzer. The production team includes Lilli Ann Linford-Foreman as director, Kit Foreman as assistant director, Phoenix Wickberg as stage manager, Randy Heise as scenic designer, Eric Denzler as lighting designer, Barbra Rich as sound designer, Angela Lund as properties run crew and Debbie Levin as lead producer.

Performance and event details, including ticket information, will be available on Ellipse Theatre Community’s website and social media channels.

etcbend.org/immersive

Rabbit Hole

Open Space Event Studios, Bend
June 4-14

Tickets: \$28.29 online
\$25 at the door



Photo courtesy of Ellipse Theatre Community

Ponderosa Players Presents

Once Upon a Mattress

The age-old story of The Princess and the Pea has been told and retold thousands of times. According to Kisky and Dash Holwerda of Ponderosa Players, *Once Upon a Mattress* is the most ridiculous of them all. “It pokes fun at the fairytale,” says Kisky, “Taking classic characters and putting them in absolutely over-the-top situations.” All of the familiar fairytale archetypes can indeed be found – Kings, Princesses, Knights, Ladies, Minstrels, Jesters and more – in abundance and ready for a rollicking good time.

Once Upon a Mattress centers around the story of Prince Dauntless, a prince whose impending marriage spoils the nuptials of the entire kingdom. His mother, Queen Aggravain, has forbidden anyone from marrying until she finds a worthy Princess for Dauntless. Of course, there is no one worthy enough to be found. Until, that is, Princess Winnifred the Woebegone splashes into the kingdom. Hailing from the swamps, “Fred” is far from the demure princesses of yore. Covered in seaweed

and ready for love, she quickly captures Dauntless’s heart, much to the chagrin of Queen Aggravain. A parade of antics ensue, ending of course with Winnifred atop a tall stack of mattresses with a tiny pea underneath.

The musical premiered on Broadway in 1959, starring Carol Burnett in the role of Winnifred, who claimed the Tony Award for Best Actress in a Musical that year. *Once Upon a Mattress* has gone on to spark multiple revivals, starring Sarah Jessica Parker in 1996 and Sutton Foster in 2024. Ponderosa Players couldn’t be more excited to bring the show to Central Oregon. “It’s absolutely hilarious,” Dash raves, “Rehearsals have already been full of side-splitting laughter. It feels like the perfect, joyful button on our 2025-26 season.”

Dash mentions this has been their first three-show season, beginning with a sold-out run of *The Little Prince* and followed by *Spring Awakening*, a cutting-edge production of the modern hit that was heralded as one of their

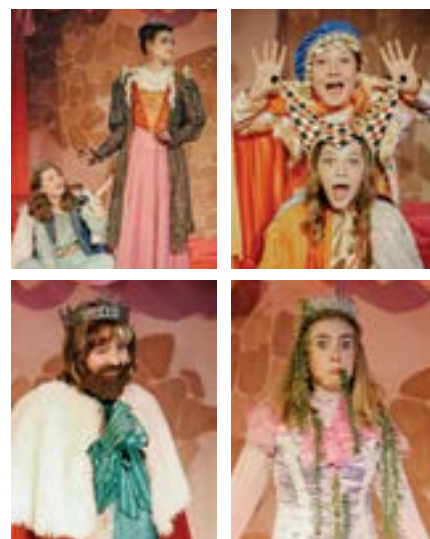
best performances to date. *Once Upon a Mattress* is the third iteration of their 11-18 MainStage program, bringing a host of Central Oregon talent spanning this full age range.

They selected 18 students of their 24 auditionees to perform *Once Upon a Mattress*, rounding out the first full season in their new theater, the Ponderosa Playhouse. They are also presenting *Once Upon a Mattress* with a live orchestra. “Rachel Robinson is returning as our conductor and we’re thrilled to have her back,” said Dash. “She has made live music possible for three of our shows now and has helped raise the caliber of our productions as a result.” Sourcing and operating all of their own technical equipment, the Holwerda’s do not shy away from the challenge of live music in their small black box space.

More is always coming down the pike for Ponderosa Players, who are already filling a waitlist for their popular summer intensive, *Too Darn Hot!* The 20 enrolled students will perform for the third year in a row at the Tower Theatre this July. More opportunity remains in the form of their winter MainStage shows, *The Phantom Tollbooth*, *Romeo & Juliet* and *Dear Evan Hansen*, which

will begin accepting submissions for auditions on June 6. The latter two shows are the inaugural performances for *Pulse*, their pre-professional company. Information and enrollment for all of their classes and shows is available now at ponderosaplayers.com.

Don’t miss *Once Upon a Mattress*, produced by Ponderosa Players and performing at the Ponderosa Playhouse, June 18-27!



Left to right, top to bottom: Autumn Orr (Prince Dauntless) and Lucy Bouchard (Queen Aggravain). Ben Griffiths (The Minstrel) and Abby James (The Jester). Olivia Lash as King Sextimus. Fiona Clark as Winnifred the Woebegone. Photos courtesy of Ponderosa Players

SISTERS EXHIBITS



Framed by Fall, photography by Scott Corder

Hood Avenue Art
357 W Hood Ave.
541-719-1800
hoodavenueart.com

Enjoy a beautiful atmosphere spotlighting the talent of over 30 Central Oregon-based artists and a dynamic group of featured artists this month, including Scott Corder (fine art photographer), Winne Givot (painter), Susie Zeitner (glass artist), and Elyse Douglas (jewelry). Each represented artist brings a distinct voice and vision to the space. Explore the rich cultural experience and the opportunity to support local artists and their work.

Gallery hours are Thursday-Tuesday, 10am-5pm (closed Wednesday). Join us every fourth Friday through summer to connect with artists, enjoy refreshments and light appetizers, and the artistic stylings of local musicians.

Sisters Gallery & Frame

222 W Hood Ave.
541-549-9552 • sistersgallery.com

Starting with the June 26 Fourth Friday Artwalk, Sisters Gallery and Frame features fabric art by Belinda Batchelder and more artwork in keeping with the Sisters Outdoor Quilt Show. Also new work by Oregon artists Denise Kester, Kay Baker, Barbara Berry, Lynn Brush, Caroline Stratton Crow, Summer Derrickson, Kimry Jelen, Dennis McGregor, Danae Miller, Lee Morrison, Mike Stasko, Randall Tillery and Linda B. Wolff. And, as always, 3-D creations by J. Chester Armstrong, Kim Black, Mitch and Michelle Deaderick, Ann Grossnickle, Mary Moore, Charley Phillips, John Scheideman and Troy Thompson. And there’s more! Framed and unframed photography by Steve Giardini, Dennis Schmidling, Gary Albertson, Wendy Birnbaum and Curtiss Abbott, along with custom framing of your own treasured images.



Artwork by Jean Wells



Artwork by Valori Wells

Stitchin’ Post Gallery

311 W Cascade Ave.
541-549-6061 • stitchinpost.com

Now showing in Stitchin’ Post’s Fiber Art Gallery through June 22, *The Magic of Horses* from June Jaeger.

Our new exhibit opens on June 26 and runs through July 20, *Distinct Voices - Shared Roots: Generations in Color & Cloth* from Jean and Valori Wells. The opening reception will be Friday, June 26 from 4-6 pm. This special exhibition features the dynamic mother-daughter duo whose shared passion for color, texture and design has helped shape the quilting and fiber arts world for decades.

Jean, founder of the Stitchin’ Post and a pioneering voice in contemporary

quilting, brings her intuitive, nature-inspired artistry, while Valori infuses the show with her bold, hand-crafted prints and globally influenced textile designs. Together, their work reflects both a deep creative bond and two distinct artistic voices—woven into a vibrant, inspiring collection.

Whether you’re a dedicated quilter, an art enthusiast, or simply drawn to the beauty of handcrafted design, this exhibit offers a rare glimpse into the evolving artistry of two generations creating side by side.



Poplar Leaves by Karen Miller

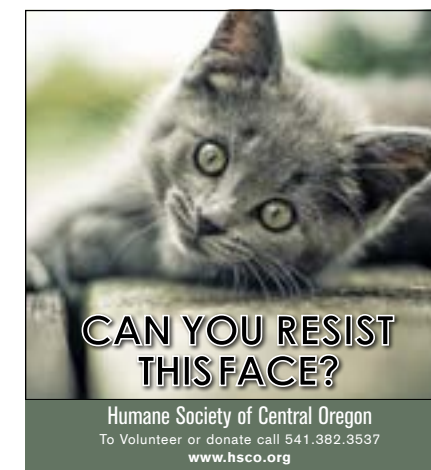
The Tree by Karen Miller

Toriizaka Art

222 West Hood Ave.
541-595 8285 • toriiizakaart.com

Toriizaka Art is presenting katazome textile works by Oregon-based artist Karen Illman Miller, from June 10 through July 15. The show explores traditional Japanese stencil-resist dyeing techniques through a contemporary lens. Katazome uses hand-cut stencils and rice-paste resist to create layered designs on fabric. Miller, a retired marine biologist, draws on her decades of studying natural systems to inform her work. Inspired by Pacific Northwest flora

and marine life, her textiles balance realism with abstraction. Karen’s works were recently featured (and sold out) at the Calvin and Mayho Tanabe Gallery in the Jordan Schnitzer Japanese Arts Learning Center at the Portland Japanese Garden.



CAN YOU RESIST THIS FACE?

Humane Society of Central Oregon
To Volunteer or donate call 541.382.3537
www.hsco.org



Stitchin’ Post Gallery
JUNE 26-JULY 20
VALORI & JEAN WELLS

311 W. CASCADE AVE. SISTERS, OR
(541) 549-6061 • stitchinpost.com



TORIIZAKA ART

CONTEMPORARY FINE ART

11am-4pm Tuesday - Saturday (and by appointment) 222 West Hood Avenue, Sisters, OR 97759

info@toriiizakaart.com
1(541) 595-8285
1(650) 580-6551
www.toriiizakaart.com



MADRAS / WARM SPRINGS

Art Adventure Gallery

185 SW Fifth St., Madras
541-475-7701 • artadventuregallery.com

Continuing through June, Art Adventure Gallery hosts its 40th anniversary celebration and *All Jefferson County* exhibit, honoring its long history of supporting the arts.

Hours are Monday-Friday, 12-4pm and Saturday, 12-5pm.

Studio on 5th

224/226 SW Fifth St., Madras
541-475-4235 (message) • Studioon5thmadras.com

Our studio invites all ages to have fun creating unique works while learning something new or renewing an old love for creating art. We feature local artists' work specializing in handcrafted woodcarving, acrylic, oil, watercolor paintings, jewelry, hand-created greeting cards and more. We hold art and craft classes at the studio or partner with local businesses. Visit our FB site for additional information.

PRINEVILLE

Rick Steber & Company — MAKERS

131 NE Fifth St.
541-447-3115 • rickstebermakers.com

On display in the retail showroom at Rick Steber — MAKERS is the incredible work of over 160 artists and artisans from Central and Eastern Oregon. Designated as an Oregon Scenic Attraction, this unique collection of one-of-a-kind items has become a destination for many, and an opportunity to introduce your family to the creative culture of the High Desert. Here you will find Native bead work, metal sculptures, leather tooling, saddle making, wood working, silversmithing, original artwork, whittlings, carvings and the complete collection of books by popular author, Rick Steber.

Open Tuesday-Saturday from 10am to 5pm.

OUTSIDE CENTRAL OREGON

BURNS

Oard's Gallery

42456 Hwy. 20 East, Burns • 541-493-2535 • oardsgallery.com

Exhibiting many one-of-a-kind items, including original, handmade arts and crafts from nine tribes around the area — baskets, beaded art, clothing, furniture, native art, paintings, rugs, jewelry and more.

"America the Beautiful" 76 Local Artists

2D & 3D art

June 1 - August 1



415 6th St., Redmond

CALENDAR FOR June

THIS MONTH'S PICKS SEE CASCADEAE.COM FOR FULL EVENT CALENDAR

- 5** | **YOUNG ARTISTS SCHOLARSHIP CONCERT**
COMMUNITY BIBLE CHURCH • sunrivermusic.org
- 6** | **BEND HANDMADE MARKET**
DOWNTOWN BEND
urbancraftuprising.com/bend-handmade-market
- 7** | **BEND POPS ORCHESTRA'S POPSPOURRI!**
MOUNTAIN VIEW HIGH SCHOOL • bendpops.org
- 20** | **THE WIZARD OF OZ BALLET**
CALDERA HIGH SCHOOL
bit.ly/4tX75m7
- 25** | **OREGON ORIGINS PROJECT VIII: ECHOES OF ERUPTION**
TOWER THEATRE • oregonorigins.org

Oregon Origins Project Presents

Echoes of Eruption



Wahayoo Panoona (Newberry Volcano) | Photo by Ellen Morris Bishop

Oregon Origins Project, an innovative arts and culture nonprofit that explores the ancient origins of the state of Oregon through creative expression, announces *Oregon Origins Project VIII: Echoes of Eruption*, a bold and multifaceted exploration of Newberry Volcano in Central Oregon, the largest volcano by area in the Cascade Range. The June 25-26 program in Bend includes a new work for contemporary dance inspired by the caldera, an evening of Northern Paiute legends and stories, an exhibition exploring geology and transformation and a special guided tour of the volcano.

"We're excited to present our first program in central Oregon by focusing on an extraordinary landscape at Bend's doorstep, Newberry National Volcanic Monument," said Matthew Packwood, executive director of Oregon Origins Project. "Newberry is a place of cultural significance to the Northern Paiute tribe and a hotbed of ongoing geologic activity, including the caldera, Big Obsidian Flow, Lava Butte and more. We invite audiences to join us in an exploration of this remarkable volcano through the arts, sciences, and Indigenous living traditions."

"Through the investigation of the volcano and working with geologists and artists, this experience has distinctly shaped my choreography and sound creation," said Samuel Hobbs, artistic director for push/FOLD Dance Company. "I feel honored to present a brand new work as we explore a much larger conversation about place, history, and transformation inspired by the physical processes held inside Newberry Volcano."

Oregon Origins Project VIII: Echoes of Eruption

June 25-26 // 7:30pm

Tower Theatre, Bend

Tickets: Flexible pricing, \$10 minimum ticket price; tickets at oregonorigins.org

Read the complete details at cascadeae.com/oregon-origins-project-presents-echoes-of-eruption.oregonorigins.org



Photo courtesy of push/FOLD Dance Company

Summer Art in Sunriver

by JIM FISTER

With the arrival of June, Sunriver is full swinging with plenty of visitors and part-time residents joining our ranks to enjoy the beauty and activities in the area. Summer in Sunriver is always a vibrant time, and the local galleries will contribute with fine art, with something for everyone.

Kristina Ziegler is a landscape photographer based in Bend, where she has lived for over 30 years. As a young child, she loved visiting the woods near her home in Illinois and staring up at the night sky. This led to many adventures hiking, backpacking, climbing mountains and international travel. Kristina started serious photography upon her retirement in 2016, specializing in what is called “astro landscape photography.” Her aim in her photography of the night sky is to combine the scientific, artistic, and spiritual aspects of studying and photographing scenes that many people are unable to see. She has introduced many people to the wonders and magic of the night sky, both through her photography and teaching. Kristina will be featured upstairs at the Betty Gray Gallery

at the Sunriver Lodge through the summer.

Downstairs, the gallery features a show from new artist Rebecca Howland. As a self-taught painter, Rebecca draws inspiration from the natural world, bringing vignettes of imagination to life through her artwork. Her show is a wide variety of her work in small formats, and features several styles of art.

The Nancy McGrath Green Gallery is showing *Stories of Our Favorite Places: Landscapes From the Heart*. The show features works by Plein Air Painters or Oregon with paintings created outdoors from nature, as well as studio paintings of places dear to the artists’ hearts. The show runs through June 28. The Gallery is open weekdays, 1-4pm and directly after church service on Sundays. 18139 Cottonwood Road in Sunriver, inside the Sunriver Christian Fellowship building.

If you are biking in Sunriver, a 6.5-mile loop features four Sunriver galleries that are open



Painted Hills Aurora by Kristina Ziegler

weekdays — located from Circle 1 to Circle 10: At the northernmost point, Nancy McGrath Green Gallery presents its plein air show. In the Village, Artists’ Gallery Sunriver features a wide range of media, from paintings and sculptures to ceramics and mixed media pieces by members of the artists’ collective. Sunriver Public Safety Building Gallery is currently showing artists Jim Fister and Barb Gonzalez. At the southern end of the loop, Betty Gray Gallery offers its two shows.

Please enjoy the summer with family and friends here in Sunriver and make sure to include art in your exploration of our area.

Nature as Muse

June’s Featured Artists at Artists’ Gallery Sunriver

“Art will never be able to exist without nature.”
~ Leonardo da Vinci

by BARB GONZALEZ

The abundance of nature around Sunriver and Central Oregon has a strong influence on the work of June’s featured artists at the Artists’ Gallery of Sunriver. Whether it’s the color of beads, Silly Dog Art Glass, moody watercolors or landscape photography, each is imbued with colors and images of nature in Spring.

Emily McFadden has been seeing earrings in everything since 2020 — in the wing of a butterfly, a colorful stack of dinner plates, the palette of a summer garden. A native Oregonian and Bend resident since 2014, Emily came to seed bead artistry with creativity already in her DNA. Her mother is a sculptor; her great aunt was a bead artist. Working in the fringe hours around homeschooling her two kids, she puts together delicate or bold patterns where color comes first and the design follows. “As soon as spring starts to round the bend,” she says, “I crave all the bright colors that come with spring and summer — this is when I start dreaming up the bright, happy designs that will help usher in the fresh new season.” That spirit of the season is exactly what you’ll find in her work, now at the gallery under her business name, The Fringed Hour.

Cheryl Chapman has worked with glass for over 30 years, the last 12 of them devoted to the demanding art of glass enamel painting. Chapman paints directly on the back of the glass, with each original piece going through as many as five kiln firings, resulting in richly colored images that are seen through the surface of the glass. Her subjects are a joyful reflection of the living creatures around us, from cats and dogs to rivers filled with fish, fields of foxes, curious owls, and most recently, birds. “I am always inspired by the flora and fauna around me,” Cheryl says. “Lately I’ve been trying to capture the grace of birds and the way they flit and flow through my garden.” Detailed patterns suggest bird feathers as each flies with a garden flower. Look for her artful lamps, and jewelry collaboration with metal artist Anton Yakushev.

Working in both photography and ceramics, Holly Fischer keeps the natural world as her constant subject. Her lens has taken her to Patagonia, where she photographed Mt. Fitz Roy in Argentina and the mountains of Torres del Paine in Chile, and this summer she heads to Tanzania to photograph the Great Migration. Closer to home, her photography captures the fleeting light and expansive landscape of Central Oregon. Her ceramics bring that same sensibility into form. Works from her Birch Series, now in the gallery, feature ceramic vessels inspired by the layered patterns and tones of aspen and birch trees, blending natural texture with refined, sculptural form.

For Dianne Lay painting is a calling. Her work captures the quiet poetry of ordinary moments and carries the memory of every place she has ever lived. The vast skies of her Nebraska childhood, the misty greens of Oregon’s Willamette Valley, and now the high desert of Sunriver all find their way into her paintings. Working primarily wet-in-wet, she lets pigment, paper, water and light do their part — each piece a quiet balance of intention and surprise. In October 2025, Dianne was awarded signature status in the Watercolor Society of Oregon, a meaningful recognition of her dedication to the medium. She paints what moves her and invites viewers to find their own moment of stillness in the work.



Photography by Holly Fischer



Oregon Landscape 2, art glass by Cheryl Chapman



My World watercolor by Dianne Lay



Beaded Jewels by Emily McFadden

Join us for Second Saturday on June 13 from 4-6pm to watch the artists demo their work process. Artists’ Gallery Sunriver is located in the Village at Sunriver.

artistsgallerysunriver.com

SUNRIVER EXHIBITS

Artists’ Gallery Sunriver Village
57100 Beaver Dr., Bldg. 19
541-593-4382

artistsgallerysunriver.com

Join us at Artists’ Gallery Sunriver Village for Second Saturday! Come see a special demonstration of an exciting new watercolor technique with artist, Dianne Lay on Saturday, June 13 from 4-7pm.

This approach sets aside the traditional brush, instead using water, a spray bottle and simple plastic cards to move and shape pigment across the paper. The process invites an element of unpredictability, producing loose, spontaneous and often abstract designs. What draws me to this method is its sense of play and discovery. “Rather than controlling every mark, I work in partnership with the materials, allowing the image to emerge organically,” says Dianne. “Each piece becomes a unique expression, shaped as much by intuition and movement as by intention.”



Watercolor by Dianne Lay

Nancy McGrath Green Gallery at Sunriver Christian Fellowship
18139 Cottonwood Rd.
541-593-1183

sunriverchristianfellowship.org/nancy-mcgrath-green-gallery

The Plein Air Painters of Oregon (PAPO) continues to present *Stories of Our Favorite Places*. This special exhibition brings together a collection of paintings created directly outdoors from nature alongside studio works inspired by locations that hold deep personal meaning for the artists.

The exhibition runs through June 28. The Gallery is open weekdays, 1-4pm and directly after church service on Sundays.

Sunriver Public Safety
57475 Abbot Dr.
541-593-8622 • sunriversdor.gov

Jim Fister and Barb Gonzales continue showing at the Sunriver Public Safety Building, open 9am-4pm weekdays. Jim finds cast-off woods and creates pieces that allow the wood grain to show flow and direction, creating composed pieces that highlight the wood rather than tooling. Barb’s photography highlights the local wonders of Central Oregon, showing scenes that are familiar, but captured in ways that give the viewer new appreciation of the area.

Sunriver Resort Lodge - Betty Gray Gallery
17600 Center Dr.
503-780-2828

Upstairs features landscape photographer Kristina Ziegler through the summer. Kristina is based in Bend, specializing in what is called “astro landscape photography.”

Downstairs, the gallery features a show from new artist Rebecca Howland. Her show is a wide variety of her work in small formats and features several styles of art.

Art will never be able to exist Without Nature!

30+ local artists

Holly Fischer ~ Photography

Dianne Lay ~ Watercolors

Emily McFadden ~ Beaded Jewels

Cheryl Chapman ~ Glass Art

Artists Gallery SUNRIVER

Village at Sunriver
Building 19 | 541.593.4382
Open Daily 10am to 7pm
www.ArtistsGallerySunriver.com

Second Saturday June 13th • 4-7pm
Wine & Nibbles
Artist Demonstrations

WORKSHOPS

There is a charge of \$20 to list classes and/or workshops or they are free with a paid display ad. Email AE@CascadeAE.com for more information.

DRY CANYON COMMUNITY ART CENTER

drycanyoncommunityartcenter.org/book-online
541-316-5448

All classes listed below located at
415 SW Sixth St., Redmond.

Fused Glass Bird Plant Stakes

June 13 or June 27, 11am-12:30pm

Add a pop of personality to your plants with these funky fused glass bird stakes! In this fun, fast-paced 1.5-hour class, you'll design and assemble your own colorful, quirky bird using vibrant glass pieces — perfect for brightening up a potted plant or garden space. No experience is necessary, and all tools and supplies are provided, so you can jump right in and enjoy the creative process. Projects will be assembled during class, then taken to the instructor's studio to be kiln-fired. Your finished bird stakes will be ready for pickup the following week — polished, fused, and full of charm. Come play with glass and leave with something delightfully unique! \$65.

Beginning Watercolor

June 10

This watercolor class with Gillian Burton offers students a supportive introduction to essential techniques across five 1.5-hour sessions. Participants will begin with foundational skills such as flat and graded washes, then explore key methods including wet-into-wet, wet-on-dry, color mixing, blending, and the expressive effects created by the natural flow and bleeding of watercolor pigments. As time allows, students will also experiment with creative mark-making using tools beyond the traditional brush, encouraging curiosity, confidence, and a deeper understanding of how watercolor responds to different techniques and materials. \$325.

Metal Clay Pendant or Earrings

June 8, 5:30-8:30pm and June 10, 5:30-7pm

During two sessions with Donna Yutzky, discover the magic of metal clay and learn how to turn it into real silver jewelry you can wear home. Metal clay is a soft, moldable material made from pure silver, allowing you to sculpt, texture, and shape your own one-of-a-kind pieces. In this class, you'll create silver pendants or earrings while learning the fundamentals of working with metal clay. We'll cover texturing techniques, design options, and how to set fire-in-place cubic zirconia stones. Whether you come with a design in mind or want to explore what's possible, the instructor will guide you through the process. This class meets over two evenings, night one: Design and create your jewelry. Pieces will be fired in the kiln by the instructor. Night two:

Learn polishing, antiquing, and finishing techniques to bring your silver pieces to life. You'll also learn how to torch-fire metal clay, giving you confidence to continue working with the material on your own. Perfect for beginners and returning students alike, this class is a great introduction to metal clay — and a chance to make something truly special. \$219.

ARTISTS' GALLERY SUNRIVER

artistsgallerysunriver.com • 541-593-4382

All classes listed below located at
57100 Beaver Dr., # 19-120, Bldg. 19, Sunriver

Fused Glass Art Classes

with Heidi Brown

June 18, 7-8:30pm – Suncatcher

June 23, 7-8:30pm – Gnomes X 2

Learn to cut and break glass, use frit, stringers and murrine to complete your very own fused glass project. Best of all, have fun with friends, create art and play with glass.

Once you have completed your project, it is packed up and then fired at 1,480 degrees in an off-site kiln (usually takes a few days). You will be notified when finished; pick up your project at the Artists' Gallery Sunriver, or have your project shipped to you for a minimal shipping cost (please allow 7-14 days for shipping). Most receive sooner. All supplies and tools are included, recommended for ages 13 and up, no experience necessary. Register at artistsgallerysunriver.com/classes or call the gallery at 541-593-4382, seats are limited, snacks and soda provided.

Smartphone Photography:

Get Your Best Summer Photos Ever

with Barb Gonzalez

June 19, 7-9pm

Don't let another vacation season go by with disappointing photos.

One of the gallery's photographers, tech writer and professional travel and fine art photographer Barb Gonzalez, walks you through your smartphone camera from the ground up. Whether you avoid tech or just got a new phone with features you haven't touched (including iPhone 17 Pro and Samsung/Android), this two-hour class will give you newfound confidence in creating beautiful vacation photos.

Tour your phone's camera features, learn the basics of great photos, then take a short walk from the gallery to practice with a real Sunriver sunset.

\$50, includes four *Learn Better Photography Photo Essentials* ebooks; or \$75, includes the complete mega bundle: eight guides and cheat sheets, including the new travel photography ebook.

Space is limited, register at artistsgallerysunriver.com/classes or call the gallery at 541-593-4382.

CELEBRITY ARTIST WORKSHOP

contactsilverspringsart@gmail.com

All classes listed below located at
SHARC Sunriver, 57250 Overlook Rd.

Pocket Sketching

with Kath Macaulay

August 3-5, 9:30am-4pm

Pocket sketching is a quick-sketching technique that allows anyone to sketch a memory, journal their travel or record anything of interest wherever they are in the world, in 25 minutes or less. The method is quick, portable and requires no clean up! Day 1 – Learn basic techniques of using a water-soluble pen for sketching. Through sketching landscapes, perspective of contrast, color and focal point will be covered. Use of watercolors will be introduced. Day 2 – Still life, people and composition. Demonstrations given.

Day 3 – Plein air sketching. We'll use the technique fearlessly anywhere. More advanced watercolor techniques with our sketches explored.

Kath Macaulay is a nationally known artist based in Tucson, Arizona. She is the creator of Pocket Sketching, currently on PBS/OPB weekly. Macaulay and Julie Barrett, a Sunriver resident and certified teacher, will be offering this three-day workshop. Space is limited to 12 adults. \$400, includes all class materials (\$50 value). For more information and registration email Julie at contactsilverspringsart@gmail.com.

PINE MEADOW RANCH

CENTER FOR ARTS AND AGRICULTURE

All classes listed below located at Pine Meadow Ranch Center for Arts and Agriculture (PMRCAA).

Introduction to Natural Dyes: From Seed to Color

June 20, 10am-3pm

Explore the natural dyes blooming at Pine Meadow Ranch! In this one-day workshop, students learn about natural dye processes and engage in hands-on lessons about dye plant harvesting, building dye pots and coaxing color from plants. Using pre-mordanted fibers, this workshop focuses on the basics of natural dyes and the ecstatic magic of plant-based color. Participants receive a natural dye journal to document their workshop experiments along with a swatch book documenting the relationships between the dyes and the plant and animal fibers. Participants leave with one finished textile and a natural dye journal. \$200, For more information and to register, visit roundhousefoundation.org/events, email arts@roundhousefoundation.org or call 541-904-0700.

roundhousefoundation.org or call 541-904-0700.

SAGEBRUSHERS ART SOCIETY WORKSHOPS

541-617-0900 • sagebrushersartofbend.com

All classes listed below located at 117 SW Roosevelt Ave., Bend, except when noted otherwise.

Oil Painting Workshop: Non-Toxic Foundations

with Mike Wise

Tuesday, 5:30-7:30pm

This introductory workshop is designed for beginners who want to explore oil painting using safe, non-toxic methods. Students will learn how to work with solvent-free materials and create a comfortable painting setup without traditional harsh chemicals.

The class focuses on three essential oil painting fundamentals: understanding value and light to create form, basic color mixing using a limited palette, and effective brushwork and paint handling. Through demonstrations and guided practice, students will gain confidence with materials and complete a small painting while learning techniques they can continue to use at home. No prior painting experience required. Cost is \$35 per session for SageBrushers members, \$45 for non-member. Supplies included.

Light, Color & Form:

Intermediate Still Life Oil Painting

with Mike Wise

Tuesday, 3pm-5pm

Refine your life painting skills in this intermediate oil painting class focused on value, color, and composition.

Students will explore how light, shadow, and color relationships create depth, mood, and realism while working from carefully arranged still life setups. Ideal for painters with some prior experience who are ready to strengthen techniques and develop a more confident approach to oil painting.

Cost is \$35 per session for SageBrushers members, \$45 for non member. Supplies included.

Composing the Poetic Landscape

3-Day Studio Workshop for Oil & Pastel

with Barbara Jaenicke

June 27-29, 10am-5pm

This workshop takes a deep dive into the nuts and bolts of a strong landscape. The emphasis will be on shapes and editing with the goal to create the illusion of subject matter details in your landscape painting without laboring over unnecessary rendering, resulting in a more expressive and eloquent capture of your subject. Attendees will address then thumbnail planning stage and then work through a painting process that maintains the initial shapes and editing, while learning to make selective decisions for the finishing stages. Cost \$420. To register contact nancym2010@tds.net.

CALL TO ARTISTS



CALL TO ARTISTS ~ SAA Artist Studio Tour

Sisters Arts Association (SAA) issues a call to Sisters artists interested in participating in the 2026 Artist Studio Tour. The dates of the tour are Saturday and Sunday, September 19 and 20, from 10am-4pm.

Artists must live in the Sisters Country boundary or be willing to partner with an artist whose studio is within the area. There is a fee of \$150 in addition to

32 June 2026 | www.CascadeAE.com

being a current member of SAA for \$50. In return, artists retain all proceeds from the sale of their work.

Registrations are due by June 30.

The Artist Studio Tour is a way for artists to express their creative side by opening their studios to the public to share how, why and where their art is created. Studio Tour connects the community with Sisters artists as the public is invited into artists' workspaces to see the creative process firsthand, get inspired, and support local artists. It enriches the cultural life of Sisters while celebrating the talent of local artists.

Further details and online registration is available at sistersartsassociation.org/2026-artist-studio-tour.

OPEN CALL ~

Pine Meadow Ranch Center for Arts & Agriculture

Artists, ecological scientists and scholars wanting to explore connections to nature, land conservation, historic preservation, agriculture and community-building projects are invited to Pine Meadow Ranch Center for Arts & Agriculture (PMRCAA) in Sisters for the 2027 residency program, which

offers a space where cultural practitioners, scientists and creative thinkers can immerse themselves in their work and research through access to studios, open spaces and beautiful scenery. PMRCAA seeks cultural practitioners and scientists who want to engage with the atmosphere of a working ranch and with the local community.

We invite artists, scientists, and scholars whose work explores the theme of Process and Material to apply for the 2027 residency; application deadline is midnight, July 6.

View complete details at bit.ly/4vnQY27.



Cascades Theatrical Company proudly presents:

BROADWAY IN BEND!

A bold new initiative created to celebrate and expand high-quality theatre in Central Oregon. With the goal of positioning Bend as a true destination for theater lovers everywhere, CTC will produce popular Broadway titles, expand artistic opportunities, and deepen connections to the performing arts with audiences locally and beyond Bend.

Kicking off our inaugural BROADWAY IN BEND!

"YOUNG FRANKENSTEIN. THE MUSICAL" (OCTOBER, 2026).

"DEAR JACK. DEAR LOUISE" (FEBRUARY, 2027). AND

"AMÉLIE. THE MUSICAL" (MAY, 2027)!

BROADWAY IN BEND! is also an open invitation to other theatre organizations in the area to join this initiative. For more info, please email Chris at chris@cascadestheatrical.org or call 541.389.0803.

More info
here!



OLD MILL DISTRICT'S
25th Anniversary



DANCE PARTY



FREE ENTRY

ALL AGES

SATURDAY • JUNE 20

DOORS 6 P.M.

DJ ERIC RHODES

WITH **SOMUCHHOUSE**
BENDCONCERTS.COM



HAYDEN HOMES
AMPHITHEATER
BEND, OR.